

# Quality

---

**A High Performance Spark DQ Library**

*Chris Twiner*

*Copyright @ 2022 - UBS AG*

## Table of contents

---

1. Quality - 0.1.3.1-RC3	5
1.1 Run complex data quality rules using simple SQL in a batch or streaming Spark application at scale.	5
1.2 Enhanced Spark Functionality	5
2. Getting Started	6
2.1 Building and Setting Up	6
2.2 Defining & Running your first RuleSuite	11
2.3 Those are some Quality flavours	13
2.4 Key SQL Functions to use in your Rules	17
2.5 Reading & Writing RuleSuites	18
2.6 Running Quality on Databricks	22
2.7 Running Quality on Fabric	24
3. About	25
3.1 History	25
3.2 Performance Choices	27
3.3 Changelog	34
4. Model	36
4.1 Rule Model	36
4.2 Storage Model	38
4.3 Meta Rulesets?	39
5. Advanced Usage	40
5.1 Bloom Filters	40
5.2 Map Functions	43
5.3 Aggregation Functions	45
5.4 User Defined Functions	47
5.5 PRNG Functions	52
5.6 Row ID Functions	53
5.7 QualityRules	55
5.8 QualityFolder	61
5.9 QualityExpressions	63
5.10 Validation	65
5.11 Expression Documentation	67
5.12 View Loading	68
6. SQL Functions Documentation	69
6.1 _	69
6.2 _lambda_	69

6.3	agg_Expr	69
6.4	as_uuid	69
6.5	big_Bloom	69
6.6	callFun	69
6.7	coalesce_If_Attributes_Missing	70
6.8	coalesce_If_Attributes_Missing_Disable	70
6.9	comparable_Maps	70
6.10	digest_To_Longs	70
6.11	digest_To_Longs_Struct	70
6.12	disabled_Rule	70
6.13	drop_field	70
6.14	failed	71
6.15	field_Based_ID	71
6.16	flatten_Results	71
6.17	flatten_Rule_Results	71
6.18	from_yaml	71
6.19	hash_Field_Based_ID	71
6.20	hash_With	71
6.21	hash_With_Struct	71
6.22	id_base64	72
6.23	id_Equal	72
6.24	id_from_base64	72
6.25	id_raw_type	72
6.26	id_size	72
6.27	inc	72
6.28	long_Pair	72
6.29	long_Pair_Equal	72
6.30	long_Pair_From_UUID	72
6.31	map_Contains	73
6.32	map_Lookup	73
6.33	meanF	73
6.34	murmur3_ID	73
6.35	pack_Ints	73
6.36	passed	73
6.37	prefixed_To_Long_Pair	73
6.38	print_Code	73
6.39	print_Expr	74
6.40	probability	74

6.41	probability_In	74
6.42	provided_ID	74
6.43	results_With	74
6.44	return_Sum	74
6.45	reverse_Comparable_Maps	74
6.46	rng	74
6.47	rng_Bytes	75
6.48	rng_ID	75
6.49	rng_UUID	75
6.50	rule_result	75
6.51	rule_Suite_Result_Details	75
6.52	small_Bloom	75
6.53	soft_Fail	76
6.54	soft_Failed	76
6.55	strip_result_ddl	76
6.56	sum_With	76
6.57	to_yaml	76
6.58	unique_ID	77
6.59	unpack	77
6.60	unpack_Id_Triple	77
6.61	update_field	77
6.62	za_Field_Based_ID	77
6.63	za_Hash_Longs_With	77
6.64	za_Hash_Longs_With_Struct	77
6.65	za_Hash_With	77
6.66	za_Hash_With_Struct	77
6.67	za_Longs_Field_Based_ID	78

## 1. Quality - 0.1.3.1-RC3

---

Average			
Statement	95.04 %	Branch	96.15 %

### 1.1 Run complex data quality rules using simple SQL in a batch or streaming Spark application at scale.

---

Write rules using simple SQL or create re-usable functions via SQL Lambdas.

Your rules are just versioned data, store them wherever convenient, use them by simply defining a column.

- **NEW** test packages for [Fabric](#)

Rules are evaluated lazily during Spark actions, such as writing a row, with results saved in a single predictable column.

### 1.2 Enhanced Spark Functionality

---

Lookup Functions are distributed across the Spark cluster and held in memory, as such no shuffling is required where the shuffling introduced by joins may be too expensive:

- Support for massive [Bloom Filters](#) while retaining FPP (i.e. several billion items at 0.001 would not fit into a normal 2gb byte array)
- [Map lookup](#) expressions for exact lookups and contains tests, using broadcast variables under the hood they are a great fit for small reference data sets
- [View loading](#) - manage the use of session views in your application through configuration and a pluggable [DataFrameLoader](#)
- [Lambda Functions](#) - user provided re-usable sql functions over late bound columns
- Fast PRNG's exposing [RandomSource](#) allowing pluggable and stable generation across the cluster
- [Aggregate functions](#) over Maps expandable with simple SQL Lambdas
- [Row ID](#) expressions including guaranteed unique row IDs (based on MAC address guarantees)

Plus a collection of handy [functions](#) to integrate it all.

---

Last update: January 16, 2025 13:21:08

Created: January 16, 2025 13:21:08

## 2. Getting Started

---

### 2.1 Building and Setting Up

---

#### 2.1.1 Migrating from 0.0.3 to 0.1.0

The quality package has been trimmed down to common functionality only. DSL / Column based functions and types have moved to specific packages similar to implicits:

```
import com.sparkutils.quality._
import functions._
import types._
import implicits._
```

The functions package aims to have an equivalent column dsl function for each bit of sql based functionality. The notable exception to this is the lambda, callFun and \_() functions, for which you are better off using your languages normal support for abstraction. A number of the functions have been, due to naming choice, deprecated they will be removed in 0.2.0.

Spark 2.4 support is, as of this release, deprecated but not removed, future 0.1.x versions will continue to support but 0.2.0 will remove it entirely.

#### 2.1.2 Building The Library

- fork,
- use the Scala dev environment of your choice,
- or build directly using Maven

#### Building via commandline

For OSS versions (non Databricks runtime - dbr):

```
mvn --batch-mode --errors --fail-at-end --show-version -DinstallAtEnd=true -DdeployAtEnd=true -DskipTests install -P Spark321
```

but dbr versions will not be able to run tests from the command line (typically not an issue in IntelliJ):

```
mvn --batch-mode --errors --fail-at-end --show-version -DinstallAtEnd=true -DdeployAtEnd=true -DskipTests clean install -P 10.4.dbr
```

You may also build the shaded uber test jar for easy testing in Spark clusters for each profile:

```
mvn -f testShades/pom.xml --batch-mode --errors --fail-at-end --show-version -DinstallAtEnd=true -DdeployAtEnd=true -Dmaven.test.skip=true clean install -P 10.4.dbr
```

The uber test jar artefact starts with 'quality\_testshade\_' instead of just 'quality\_' and is located in the testShades/target/ directory of a given build. This is also true for the artefacts of a runtime build job within a full build gitlab pipeline. All of the required jar's are shaded so you can quickly jump into using Quality in [notebooks for example](#).

#### 2.1.3 Running the tests

In order to run the tests you must follow [these instructions](#) to create a fake winutils.

Also ensure only the correct target Maven profile and source directories are enabled in your IDE of choice.

The performance tests are not automated and must be manually run when needed.

When running tests on jdk 17/21 you also need to add the following startup parameters:

```
--add-opens=java.base/java.lang=ALL-UNNAMED
--add-opens=java.base/java.lang.invoke=ALL-UNNAMED
--add-opens=java.base/java.lang.reflect=ALL-UNNAMED
--add-opens=java.base/java.io=ALL-UNNAMED
```

```
--add-opens=java.base/java.net=ALL-UNNAMED
--add-opens=java.base/java.nio=ALL-UNNAMED
--add-opens=java.base/java.util=ALL-UNNAMED
--add-opens=java.base/java.util.concurrent=ALL-UNNAMED
--add-opens=java.base/java.util.concurrent.atomic=ALL-UNNAMED
--add-opens=java.base/sun.nio.ch=ALL-UNNAMED
--add-opens=java.base/sun.nio.cs=ALL-UNNAMED
--add-opens=java.base/sun.security.action=ALL-UNNAMED
--add-opens=java.base/sun.util.calendar=ALL-UNNAMED
```

Also for Spark 4 builds requiring 17/21 you must use Scala SDK 2.13.12 or similar which supports higher jdk versions.

## 2.1.4 Build tool dependencies

Quality is cross compiled for different versions of Spark, Scala *and* runtimes such as Databricks. The format for artifact's is:

```
quality_RUNTIME_SPARKCOMPATVERSION_SCALACOMPATVERSION-VERSION.jar
```

e.g.

```
quality_3.4.1.oss_3.4_2.12-0.1.3.jar
```

The build poms generate those variables via maven profiles, but you are advised to use properties to configure e.g. for Maven:

```
<dependency>
  <groupId>com.sparkutils</groupId>
  <artifactId>quality_${qualityRuntime}_${sparkShortVersion}_${scalaCompatVersion}</artifactId>
  <version>${qualityVersion}</version>
</dependency>
```

The full list of supported runtimes is below:

Spark Version	sparkShortVersion	qualityRuntime	scalaCompatVersion
2.4.6	2.4		2.11
3.0.3	3.0		2.12
3.1.3	3.1		2.12
3.1.3	3.1	9.1.dbr_	2.12
3.2.0	3.2		2.12
3.2.1	3.2	3.2.1.oss_	2.12
3.2.1	3.2	10.4.dbr_	2.12
3.3.2	3.3	3.3.2.oss_	2.12
3.3.2	3.3	11.3.dbr_	2.12
3.3.2	3.3	12.2.dbr_	2.12
3.3.2	3.3	13.1.dbr_	2.12
3.4.1	3.4	3.4.1.oss_	2.12
3.4.1	3.4	13.1.dbr_	2.12
3.4.1	3.4	13.3.dbr_	2.12
3.5.0	3.5	3.5.0.oss_	2.12
3.5.0	3.5	14.0.dbr_	2.12
3.5.0	3.5	14.3.dbr_	2.12

Fabric 1.3 uses the 3.5.0.oss\_ runtime, other Fabric runtimes may run on their equivalent OSS version. Databricks 15.4 LTS is compatible with the 14.3.dbr\_ runtime.

2.4 support is deprecated and will be removed in a future version. 3.1.2 support is replaced by 3.1.3 due to interpreted encoder issues.

### Databricks 13.x support

13.0 also works on the 12.2.dbr\_ build as of 10th May 2023, despite the Spark version difference. 13.1 requires its own version as it backports 3.5 functionality. The 13.1.dbr quality runtime build also works on 13.2 DBR. 13.3 LTS has its own runtime

### Databricks 14.x support

Due to back-porting of SPARK-44913 frameless 0.16.0 (the 3.5.0 release) is not binary compatible with 14.2 and above which has back-ported this 4.0 interface change. Similarly, 4.0 / 14.2 introduces a change in resolution so a new runtime version is required upon a potential fix for 44913 in frameless. As such 14.3 has its own runtime

### 0.1.3 Requires com.sparkutils.frameless for newer releases

Quality 0.1.3 uses [com.sparkutils.frameless](#) for the 3.5, 13.3 and 14.x releases together with the [shim project](#), allowing quicker releases of Databricks runtime supports going forward. The two frameless code bases are not binary compatible and will require recompilation. This may revert to `org.typelevel.frameless` in the future.

## 2.1.5 Sql functions vs column dsl

Similar to normal Spark functions there Quality's functions have sql variants to use with `select / sql` or `expr()` and the dsl variants built around `Column`.

You can use both the sql and dsl functions often without any other Quality runner usage, including lambdas. To use the dsl functions, import `quality.functions._`, to use the sql functions you can either use the `SparkExtension` or the `registerXX` functions available from the quality package.

### Developing for a Databricks Runtime

As there are many compatibility issues that Quality works around between the various Spark runtimes and their Databricks equivalents you will need to use two different runtimes when you do local testing (and of course you *should* do that):

```
<properties>
  <qualityVersion>0.1.3</qualityVersion>
  <qualityTestPrefix>3.4.1.oss_</qualityTestPrefix>
  <qualityDatabricksPrefix>13.1.dbr_</qualityDatabricksPrefix>
  <sparkShortVersion>3.4</sparkShortVersion>
  <scalaCompatVersion>2.12</scalaCompatVersion>
</properties>

<dependencies>
  <dependency>
    <groupId>com.sparkutils.</groupId>
    <artifactId>quality_${qualityTestPrefix}${sparkShortVersion}_${scalaCompatVersion}</artifactId>
    <version>${qualityVersion}</version>
    <scope>test</scope>
  </dependency>
  <dependency>
    <groupId>com.sparkutils</groupId>
    <artifactId>quality_${qualityDatabricksPrefix}${sparkShortVersion}_${scalaCompatVersion}</artifactId>
    <version>${qualityVersion}</version>
    <scope>compile</scope>
  </dependency>
</dependencies>
```

That horrific looking "." on the test groupId is required to get Maven 3 to use different versions [many thanks for finding this Zheng](#).

It's safe to assume better build tools like gradle / sbt do not need such hackery.



The known combinations requiring this approach is below:

Spark Version	sparkShortVersion	qualityTestPrefix	qualityDatabricksPrefix	scalaCompatVersion
3.2.1	3.2	3.2.1.oss_	10.4.dbr_	2.12
3.3.0	3.3	3.3.0.oss_	11.3.dbr_	2.12
3.3.2	3.3	3.3.2.oss_	12.2.dbr_	2.12
3.4.1	3.4	3.4.1.oss_	13.1.dbr_	2.12
3.5.0	3.5	3.5.0.oss_	14.0.dbr_	2.12
3.5.0	3.5	3.5.0.oss_	14.3.dbr_	2.12

## 2.1.6 Using the SQL functions on Spark Thrift (Hive) servers

Using the configuration option:

```
spark.sql.extensions=com.sparkutils.quality.impl.extension.QualitySparkExtension
```

when starting your cluster, with the appropriate compatible Quality runtime jars - the test Shade jar can also be used -, will automatically register the additional SQL functions from Quality.

### Spark 2.4 runtimes are not supported

2.4 is not supported as Spark doesn't provide for SQL extensions in this version.

### Pure SQL only

Lambdas, blooms and map's cannot be constructed via pure sql, so the functionality of these on Thrift/Hive servers is limited.

## Query Optimisations

The Quality SparkExtension also provides query plan optimisers that re-write as\_uuid and id\_base64 usage when compared to strings. This allows BI tools to use the results of view containing as\_uuid or id\_base64 strings in dashboards. When the BI tool filters or selects on these strings passed down to the **same view**, the string is converted back into its underlying parts. This allows for predicate pushdowns and other optimisations against the underlying parts instead of forcing conversions to string.

These two currently existing optimisations are applied to joins and filters against =, <=>, >, >=, <, <= and "in".

In order to use the query optimisations within normal job / calculator writing you must still register via spark.sql.extensions but you'll also be able to continue using the rest of the Quality functionality.

## Configuring on Databricks runtimes

In order to register the extensions on Databricks runtimes you need to additionally create a cluster init script much like:

```
#!/bin/bash
cp /dbfs/FileStore/XXXX-quality_testshade_12_2_ver.jar /databricks/jars/quality_testshade_12_2_ver.jar
```

where the first path is your uploaded jar location. You can create this script via a notebook on running cluster in the same workspace with throwaway code much like this:

```
val scriptName = "/dbfs/add_quality_plugin.sh"
val script = s""""
#!/bin/bash
```

```
cp /dbfs/FileStore/XXX-quality_testshade_12_2_ver.jar /databricks/jars/quality_testshade_12_2_ver.jar
"""
import java.io._

new File(scriptName).createNewFile
new PrintWriter(scriptName) {write(script); close}
```

You must still register the Spark config extension attribute, but also make sure the Init script has the same path as the file you created in the above snippet.

### 2.1.7 2.4 Support requires 2.4.6 or Janino 3.0.16

---

Due to [Janino #90](#) using 2.4.5 directly will bring in 3.0.9 janino which can cause VerifyErrors, use 2.4.6 if you can't use a 3.x Spark.

---

Last update: January 16, 2025 13:21:08

Created: January 16, 2025 13:21:08

## 2.2 Defining & Running your first RuleSuite

```
import com.sparkutils.quality._

// setup all the Quality sql functions
registerQualityFunctions()

// define a rule suite
val rules = RuleSuite(rsId, Seq(
  RuleSet(Id(50, 1), Seq(
    Rule(Id(100, 1), ExpressionRule("a % 2 == 0")),
    Rule(Id(100, 2), ExpressionRule("b + 20 < 10")),
    Rule(Id(100, 3), ExpressionRule("(100 * c) + d < e"))
  )),
  RuleSet(Id(50, 2), Seq(
    Rule(Id(100, 5), ExpressionRule("e > 60 or e < 30"))...
  )),
  RuleSet(Id(50, 3), Seq(
    Rule(Id(100, 9), ExpressionRule("i = 5")),
    ...
  ))
), Seq(
  LambdaFunction("isReallyNull", "param -> isNull(param)", Id(200,134)),
  LambdaFunction("isGreaterThan", "(a, b) -> a > b", Id(201,131))
))

// add the ruleRunner expression to the DataFrame
val withEvaluatedRulesDF = sparkSession.read.parquet(...).
  withColumn("DataQuality", ruleRunner(rules))

withEvaluatedRulesDF.write. ... // or show, or count, or some other action
```

Your expressions used, in dq/triggers, output expressions (for Rules and Folder) and lambda functions can contain any valid SQL that does not include Nondeterministic functions such as rand(), uuid() or indeed the Quality random and unique\_id() functions.

### 3.4 & Sub queries

Prior to 3.4 exists, in, and scalar subqueries (correlated or not) could not be used in any Quality rule SQL snippets.

3.4 has allowed the use of most sub query patterns, such as checking foreign keys via an exists in a dq rule where the data is to large for maps, or selecting the maximum matching value in an output expression. There are some oddities like you must use an alias on the input dataframe if a correlated subquery also has the same field names, not doing so results in either silent failure or at best an 'Expression "XXX" is not an rvalue' compilation error. The ruleEngineWithStruct transformer will automatically add an alias of 'main' to the input dataframe.

Lambdas however introduce some complications, 3.4 quite reasonably had no intention of supporting the kind of thing Quality is doing, so there is code making it work for the obvious use case of DRY using row attributes.

Spark 4.0 / 14.3 LTS introduces [SPARK-47509](#) which limits support by blocking all possible usages. Quality versions after 0.1.3-RC4 work around this by translating all lambda functions at call site to the direct expression. This change has had the added benefit of allowing more complex re-use patterns but may result in more complex errors or the 47509 error.

Per 47509, Quality enables this behaviour only when spark.sql.analyzer.allowSubqueryExpressionsInLambdasOrHigherOrderFunctions is false (the default for Spark 4) or not defined, otherwise the behaviour allows the usage as a higher order function (e.g. in transform etc.) and acts as prior to 0.1.3-RC4.

```
LambdaFunction("genMax", "ii -> select max(i_s.i) from tableName i_s where i_s.i > ii", Id(2404,1))
```

Calling with genMax(i) or genMax(i \* 1) in an Rule or OutputExpression, where i is an column attribute will work and be translated as a join, per 47509 using it within transform will have correctness issues.

### 2.2.1 withColumn is BAD - how else can I add columns?

I understand repeatedly calling withColumn/withColumnRenamed can cause performance issues due to excessive projections but how else can I add a RuleSuite in Spark?

```
// read a file and apply the rules storing results in the column DataQuality
sparkSession.read.parquet("theFilePath").
  transform(addDataQualityF(rules, "DataQuality"))
```

```
// read a file and apply the rules storing the overall result and details in the columns overallResult, dataQualityResults
sparkSession.read.parquet("theFilePath").
  transform(addOverallResultsAndDetailsF(rules, "overallResult",
    "dataQualityResults"))
```

The transform functions allow easy chaining of operations on DataFrames. However you can equally use the non "xxxxxF" functions such as addOverallResultsAndDetails with the same names to directly add columns and rule processing.

## 2.2.2 Filtering the Results

The two most common cases for running DQ rules is to report on and filter out bad rows. Filtering can be implemented for a RuleSuiteResult with:

```
withEvaluatedRulesDF.filter("DataQuality.overallResult = passed()")
```

Getting *all* of the rule results can be implemented with the flattenResults function:

```
val exploded = withEvaluatedRulesDF.select(expr("***"),
  expr("explode(flattenResults(DataQuality))").
  as("struct")).select("","struct.*")
```

Flatten results unpacks the resulting structure, including unpacking all the Id and Versions Ints combined into the single LongType for storage.

---

Last update: January 16, 2025 13:21:08

Created: January 16, 2025 13:21:08

## 2.3 Those are some Quality flavours

Quality has four main flavours with sprinklings of other Quality ingredients like the [sql function suite](#).

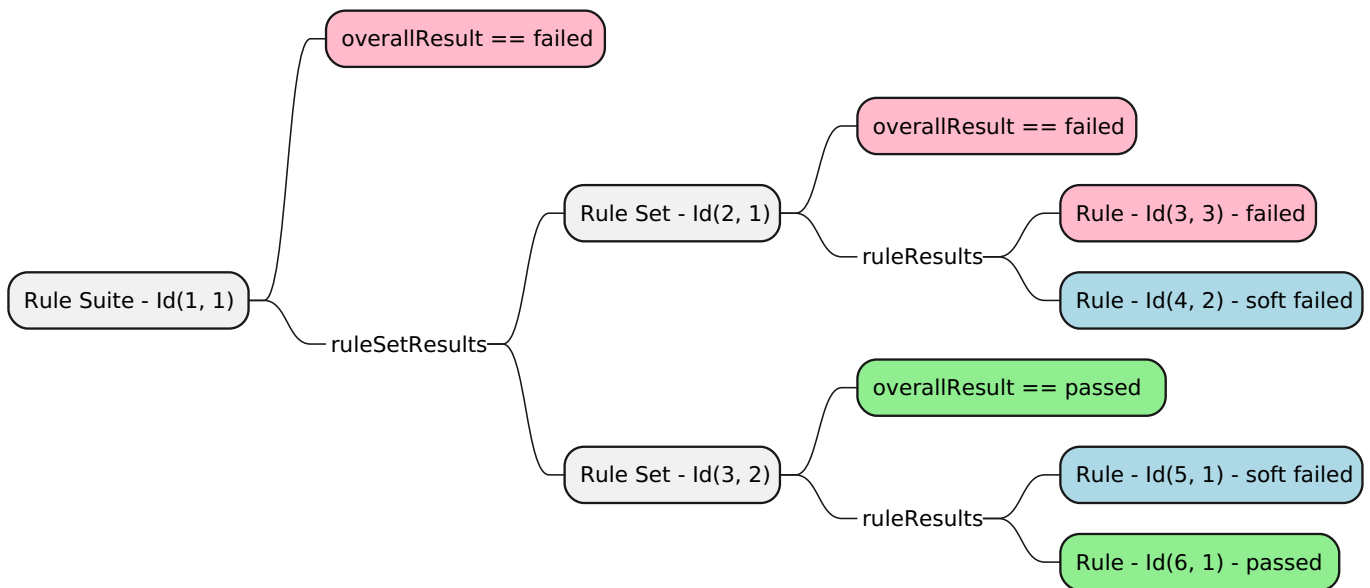
These flavours are provided by four "runners" which add a Column to a Spark Dataset/Dataframe.

### 2.3.1 Quality / QualityData - ruleRunner

Execute SQL based [data validation](#) rules, capture all the results and store them *with* your data for easy and fast access.

*Example Usage:* Validating in-bound data or the results of a calculation.

*What is stored:*



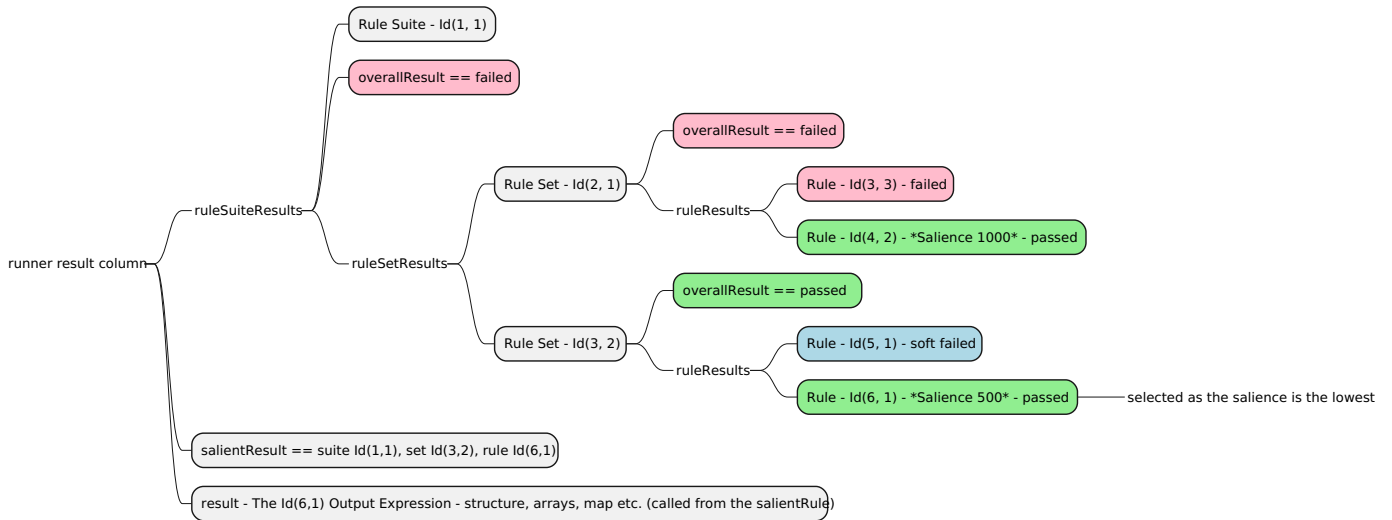
### 2.3.2 QualityRules - ruleEngineRunner

[QualityRules](#) extends the base Quality framework to provide the ability to generate output based on a single SQL rule matching the input data. Effectively an auditable large scale SQL case statement.

Conceptually trigger rules are the *when* and Output rules are the *then* ordered by salience.

*Example Usage:* Derivation Logic.

*What is stored:*



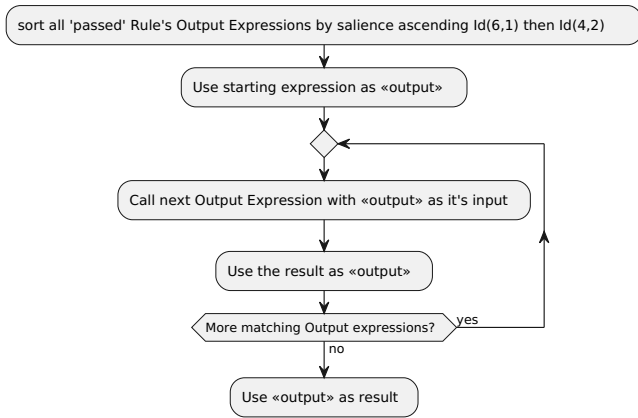
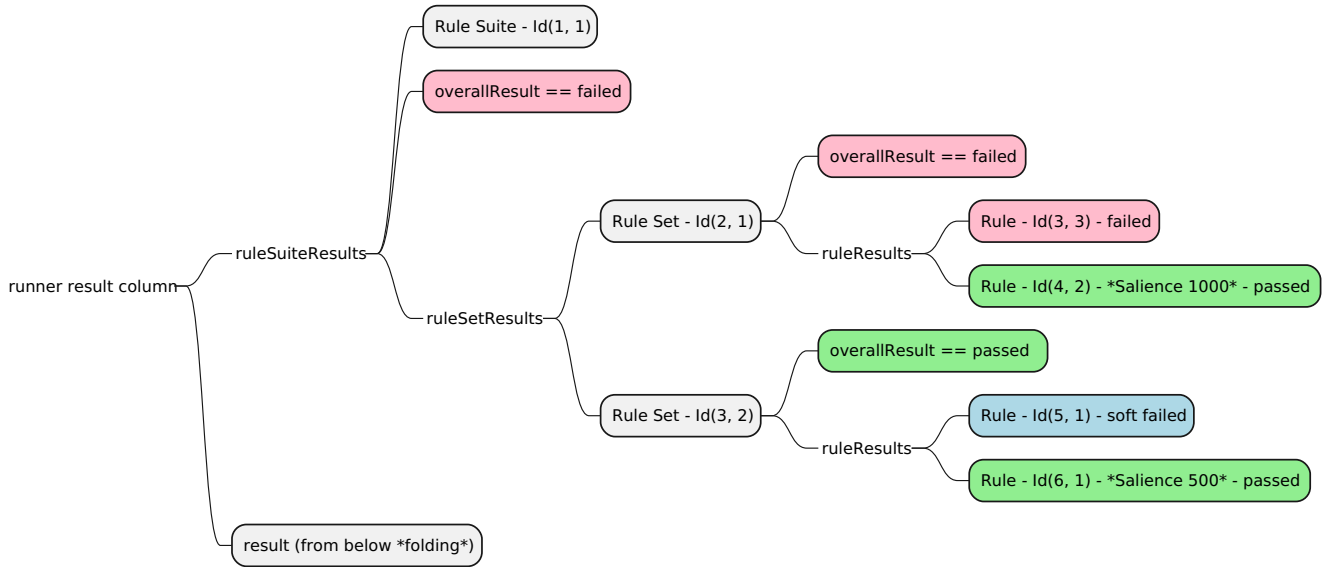
### 2.3.3 QualityFolder - ruleFolderRunner

**QualityFolder** extends **QualityRules** providing the ability to change values of attributes based on any number of SQL rules matching the input data.

Unlike **QualityRules** which uses saliency to select only one Output expression, Folder uses saliency to order the execution of *all* the matching Trigger's paired Output Expressions - **folding** the results as it goes.

*Example Usage:* Correction of in-bound data to enable subsequent calculators to process, defaulting etc.

*What is stored:*

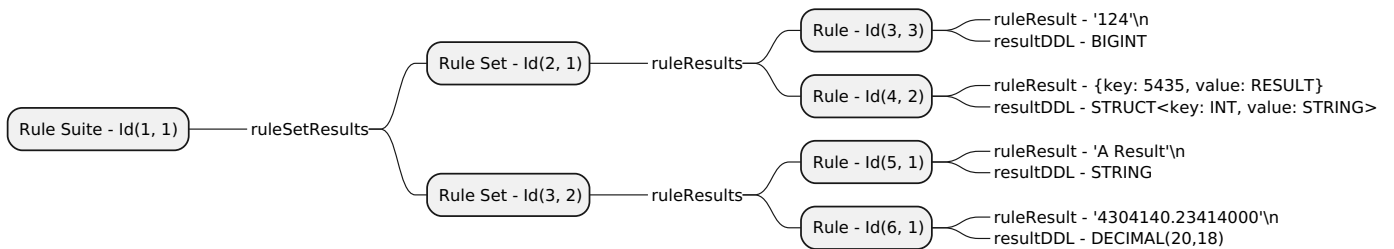


### 2.3.4 QualityExpressions - ExpressionRunner

**QualityExpressions** extends **QualityRules** providing the raw results as yaml strings (with type) for expressions and allowing aggregate expressions.

*Example Usage:* Providing totals or other relevant aggregations over datasets or DQ results - e.g. only deem the data load correct when 90% of the rows have good DQ.

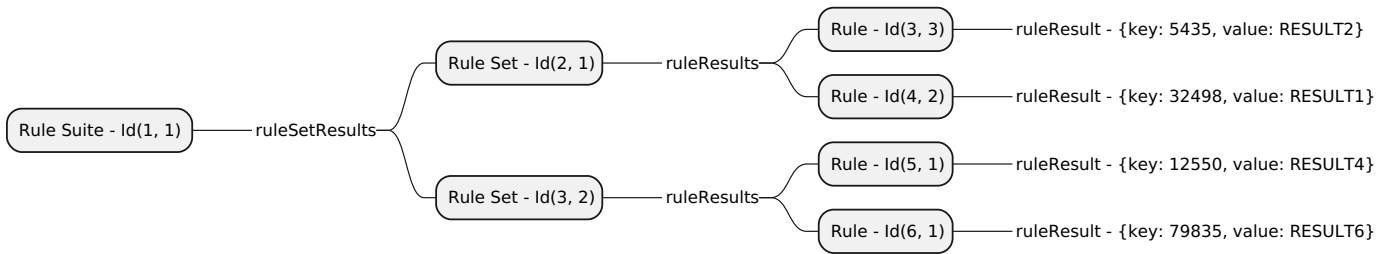
*What is stored:*



You can also use the `typedExpressionRunner`, which saves the results of expressions with the same type.

*Example Usage:* Instead of checking if something exists in a view in a rule, then using the view's value in an Output expression, use `typedExpressionRunner` to save the lookup value directly. The rule can check if `rule_result` is null, this can noticeably speed up view heavy queries.

*What is stored:* For a type of STRUCT




---

Last update: January 16, 2025 13:21:08

Created: January 16, 2025 13:21:08



## 2.4 Key SQL Functions to use in your Rules

---

### 2.4.1 Expressions with constants

---

- `passed()` - the value representing a passed rule
- `failed()` - the value representing a failed rule
- `soft_failed()` - the value representing a failed rule which doesn't break the bank
- `disabled_rule()` - the value representing a rule which has been disabled and should be ignored

### 2.4.2 Expressions which take expression parameters

---

- `probability(x)` - returns the probability (between 0.0 for a fail and 1.0 for pass) of a rule result
- `pack_ints(lower, higher)` - returns a Long with both the lower and higher int's packed in, used for id matching
- `soft_fail( x )` - if the expression doesn't result in a Passed it returns `softFailed()` which does not trigger an overall `failed()` RuleSuite, this is ideal for when you want to flag a rule as passing a test you wish to query on later but do not care if it doesn't pass. It can be treated as a "warn" or `passed()` expression.
- `rule_suite_result_details( ruleSuiteResult )` - separates the `RuleSuiteResult.overallResult` from the rest of the structure should it be needed typically this is done via the `addOverallResultsAndDetailsF`
- `rule_result(ruleSuiteResultColumn, packedRuleSuiteId, packedRuleSetId, packedRuleId)` uses the packed long id's to retrieve the integer `ruleResult` (or `ExpressionRunner` result) or null if it can't be found.

---

Last update: January 16, 2025 13:21:08

Created: January 16, 2025 13:21:08

## 2.5 Reading & Writing RuleSuites

---

### 2.5.1 Reading & Writing RuleSuites

---

Typically you'd save the RuleSuite in configuration tables within a Database or Delta or some other easy to edit store.

Saving:

```
// The lambda functions from the RuleSuite
val lambdaDF = toLambdaDS(rules)
lambdaDF.write ....

// The rest of the rules
val ruleDF = toRuleSuiteDF(rules)
ruleDF.write ....
```

The field names used follow the convention of the default Product Encoder but can be renamed as desired.

Similarly, reading the rules can be as simple as:

```
val rereadWithoutLambdas = readRulesFromDF(ruleDF,
  col("ruleSuiteId"),
  col("ruleSuiteVersion"),
  col("ruleSetId"),
  col("ruleSetVersion"),
  col("ruleId"),
  col("ruleVersion"),
  col("ruleExpr")
)

val reReadLambdas = readLambdasFromDF(lambdaDF.toDF(),
  col("name"),
  col("ruleExpr"),
  col("functionId"),
  col("functionVersion"),
  col("ruleSuiteId"),
  col("ruleSuiteVersion")
)

val reReadRuleSuite = integrateLambdas(rereadWithoutLambdas, reReadLambdas)
```

The column names used during reading are not assumed and must be specified.

### 2.5.2 Versioned rule datasets

---

The user is completely free to chose their own version management approach, but the design is aimed at immutability and evidencing.

To make things easy a simple scheme with library functions in the simpleVersioning package are provided:

1. Rules can be added to rulesets (or indeed new rulesets) with just a single row within the input DF, this must increase the RuleSet AND RuleSuites version:

ruleSuiteId	ruleSuiteVersion	ruleSetId	ruleSetVersion	ruleId	ruleVersion	ruleExpr
1	1	1	1	1	1	/* existing rule rows */ true()
1	2	1	2	2	1	/* new rule */ failed()

2. Similarly, you can change a rule by adding a new row which increments the Rule Id's, RuleSet AND RuleSuites versions:

ruleSuiteId	ruleSuiteVersion	ruleSetId	ruleSetVersion	ruleId	ruleVersion	ruleExpr
1	1	1	1	1	1	/* existing rule row */ true()
1	2	1	2	1	2	/* new version of the above rule */ failed()

3. To delete a rule you can either use disabled() to flag the rule is inactivated or DELETED to flag the rule to be removed from a RuleSet, as before each version must be incremented:

ruleSuiteId	ruleSuiteVersion	ruleSetId	ruleSetVersion	ruleId	ruleVersion	ruleExpr
1	1	1	1	1	1	/* existing rule row */ true()
1	2	1	2	1	2	<b>DELETED</b>

4. OutputExpressions may be re-used with different versions (be it for QualityRules or QualityFolder), each rule row that needs to use a later OutputExpression must increment all of its Id versions. You may be advised to use lambdas to soften the impact:

ruleSuiteId	ruleSuiteVersion	ruleSetId	ruleSetVersion	ruleId	ruleVersion	ruleExpr	ruleE
1	1	1	1	1	1	true()	60
1	2	1	2	1	2	true()	60

5. Lambda Expressions for a RuleSuite simply take the latest version for a given lambda id. If you want to delete a lambda (for example you have used a name that is now an official Spark sql function) you can add a DELETED row for a given RuleSuite with a higher version.

ruleSuiteId	ruleSuiteVersion	name	functionId	functionVersion	ruleExpr
1	1	aToTrue	1	1	/** oops */ a -> a
1	1	always1	2	1	a -> 1
1	2	aToTrue	1	2	/** corrected */ a -> true()
1	2	always1	2	2	<b>DELETED</b>

To use these you replace the above with:

```
import com.sparkutils.quality._
import simpleVersioning._

val rereadWithoutLambdas = readVersionedRulesFromDF(ruleDF,
  ...
)

val rereadLambdas = readVersionedLambdasFromDF(lambdaDF.toDF(),
  ...
)

val outputExpressions = readVersionedOutputExpressionsFromDF(outputDF,
  ...
)
val rereadWithLambdas = integrateVersionedLambdas(rereadWithoutLambdas, lambdas)
val (reread, missingOutputExpressions) = integrateVersionedOutputExpressions(rereadWithLambdas, outputExpressions)
```

The "readVersioned" functions modify the dataframe per the above logic to create full sets of ruleSuiteId + ruleSuiteVersion pairs.

The "integrateVersioned" functions will first try the same ruleSuiteId + ruleSuiteVersion pairs and were not present will take the next lowest available version. This runs on the assumption you if didn't need to change any OutputExpressions for a new ruleSuite version why should you need to create fake entries.

---

Last update: January 16, 2025 13:21:08

Created: January 16, 2025 13:21:08

## 2.6 Running Quality on Databricks

---

The aim is to have explicit support for LTS', other interim versions may be supported as needed.

### 2.6.1 Running 3.1 builds on Databricks Runtime 9.1 LTS

---

Use the 9.1.dbr build / profile, the artefact name will also end with `_9.1.dbr`. OSS 3.1 do not need to worry about this and should not use this profile.

Databricks has back-ported `TreePattern` including the final `nodePatterns` in `HigherOrderFunction` and 3.2's `Conf` class. As such very old versions of non-opensource Quality ( $\leq 0.5.0$ ) will fail with `AbstractMethodError`'s when `lambda`'s are used as 9.1 as the OSS binary version of `HigherOrderFunction` does not have `nodePattern`. Similarly, the `quality_testshade` jar must use the 9.1.dbr version due to `Conf` changes.

The 9.1.dbr build class files are built on the fake `TreePattern` and `HigherOrderFunction` present in the 9.1.dbr-scala source directory, they are however removed in the jar.

`ResolveTableValuedFunctions` and `ResolveCreateNamedStruct` are removed from `resolveWith` as they are binary incompatible with OSS. This does not seem to effect building `namedstructs` using `resolveWith`.

### 2.6.2 Running 3.2.1 builds on Databricks Runtime 10.4

---

Use the 10.4.dbr build / profile, the artefact name will also end with `_10.4.dbr`.

DBR 10.4 backports canonicalisation changes which allow Quality and any other code using `explode` and `arrays` to functionally run. Performance is still known to be affected. These fixes are not present in the 3.2.1 OSS release, although performance improvements may be back-ported.

`ResolveTables`, `ResolveAlterTableCommands` and `ResolveHigherOrderFunctions` are removed from `resolveWith` as they are binary incompatible with OSS.

#### **Only 10.4 LTS is supported**

10.2 version support was removed in 0.0.1

### 2.6.3 Running 3.3.0 builds on Databricks Runtime 11.3 LTS

---

Use the 11.3.dbr build / profile, the artefact name will also end with `_11.3.dbr`. Due to a backport of [SPARK-39316](#) only 11.3 LTS is supported (although likely 11.2 will also run), this changed the result type of `Add` causing incorrect aggregation precision via `aggExpr` (`Sum` and `Average` stopped using `Add` for this reason).

### 2.6.4 Running on Databricks Runtime 12.2 LTS

---

DBR 12.2 backports at least [SPARK-41049](#) from 3.4 so the base build is closer to 3.4 than the advertised 3.3.2. Building/Testing against 3.3.0 is the preferred approach for maximum compatibility.

### 2.6.5 Running on Databricks Runtime 13.0


---

As of 6th June 2023 0.0.2 run against the 12.2.dbr LTS build also works on 13.0.

### 2.6.6 Running on Databricks Runtime 13.1/13.2

---

13.1 backports a number of 3.5 oss changes, the 13.1.dbr build must be used. The 13.1.dbr build is also successfully tested against 13.2 DBR.

 **The 13.1/2 runtimes, given the LTS version, are deprecated and will be removed in 0.1.4.**


## 2.6.7 Running on Databricks Runtime 13.3 LTS

13.3 backports yet more 3.5 so the 13.3.dbr build must be used.

## 2.6.8 Running on Databricks Runtime 14.0/14.1

14.0 and 14.1 can be used with the 14.0.dbr runtime, 14.2 however is not compatible, it back-ports two changes that render Quality 0.1.3 impossible to run:

1. 44913 - StaticInvoke has changed breaking frameless binary compatibility
2. ResolveReferences now takes catalogue as a parameter

 **The 14.0/1 runtimes, given the LTS version, are deprecated and will be removed in 0.1.4.**

## 2.6.9 Running on Databricks Runtime 14.3 LTS

14.3, in addition to the 14.2 StaticInvoke and ResolveReferences changes also implements a new VarianceChecker that requires a new 14.3.dbr runtime.

## 2.6.10 Running on Databricks Runtime 15.4 LTS

15.4 LTS is compatible with the 14.3.dbr runtime.

## 2.6.11 Testing out Quality via Notebooks

You can use the appropriate runtime quality\_testshade artefact jar (e.g. [DBR 11.3](#)) from maven to upload into your workspace / notebook env (or add via maven). When using Databricks make sure to use the appropriate \_Version.dbr builds.

Then using:

```
import com.sparkutils.quality.tests.TestSuite
import com.sparkutils.qualityTests.SparkTestUtils

SparkTestUtils.setPath("path_where_test_files_should_be_generated")
TestSuite.runTests
```

in your cell will run through all of the test suite used when building Quality.

In Databricks notebooks you can set the path up via:

```
val fileLoc = "/dbfs/databricks/quality_test"
SparkTestUtils.setPath(fileLoc)
```

Ideally at the end of your runs you'll see - after 10 minutes or so and some stdout - for example a run on DBR 15.4 provides:

```
...
Running: sequenceAsKeysDecimals(com.sparkutils.qualityTests.YamlTests), finished in: 1s

Time: 633.686

OK (416 tests)

Finished. Result: Failures: 0. Ignored: 0. Tests run: 405. Time: 633686ms.
import com.sparkutils.quality.tests.TestSuite
import com.sparkutils.qualityTests.SparkTestUtils
fileLoc: String = /dbfs/databricks/quality_test
```

Last update: January 16, 2025 13:21:08

Created: January 16, 2025 13:21:08

## 2.7 Running Quality on Fabric

---

Fabric support has been added since 0.1.3.1 and, at time of the 1.3 runtime, follows the OSS Spark codebase. Other OSS stack to Synapse/Fabric runtimes may similarly "just" work.

### 2.7.1 Running on Fabric 1.3

---

Use the OSS 3.5.0 build and testShades.

### 2.7.2 Testing out Quality via Notebooks

---

This behaves the same way as [per Databricks](#) with one notable exception, System.out is not redirected so you also need:

```
// in case it's needed again
val ogSysOut = System.out
System.setOut(Console.out)
```

before running tests to see test progress.

---

Last update: January 16, 2025 13:21:08

Created: January 16, 2025 13:21:08



## 3. About

---

### 3.1 History

---

#### 3.1.1 Why Quality?

When looking at the Data Quality options for a data mesh standard runtime offering we identified gaps in the available platforms, so we asked:

What would our Data Quality Library look like?

We ended up with a highly performant and extensible row-level SQL based rule engine with low storage costs and a high degree of optimisation for both Spark and Databricks Runtimes.

#### 3.1.2 Gaps in existing Spark Offerings

[Deequ](#) and [databricks dq](#) were unsuitable for the meshes requirements, crucially these tools (and others such as OwlDQ) could not run at low cost with tight SLAs, typically requiring processing the data once to get DQ and then once more to save with DQ information or to handle streamed data, not too surprising given their focus on quality across large data sets rather than at a row processing level as a first class citizen. An important use case for DQ rules within this mesh platform is the ability to filter out bad rows but also to allow the consumer of the data to decide what they filter, requiring the producers results to ideally be stored with data rows themselves. Additionally, and perhaps most importantly, they do not support arbitrary user driven rules without recoding.

As such our notional library needs to be:

- fast to integrate into existing Spark action without much overhead
- auditable, it should be clear which rule generated which results
- capable of handling streamed data
- capable of being scripted
- integrate with DataFrames directly, also allowing consumer driven rules in addition to upstream producer DQ
- be able to fit results into a single field (e.g. a map structure of name to results) stored with the row at time of writing the results

#### 3.1.3 Resulting Solution Space

In order to execute efficiently with masses of data the calculation of data quality must scale with Spark, this requires either map functions, UDFs or better still Catalyst Expressions, enabling simple SQL to be used. Storage of results for a row could be json, xml or using nested structures.

The evaluation of these solutions can be found in the [next](#) sections.

#### 3.1.4 How did Rules and Folder come about?

Whilst developing a bookkeeping application a need for simple rules that generate an output was raised. The initial approach taken, to effectively generate a case statement, ran into size and scale limitations. The architect of the application asked - can you have an output sql statement for the DQ rules? The result is QualityRules, although it should probably be called QualityCase...

QualityFolder came from a related application which had a need to transform data - providing defaulting in some circumstances - but still had to be auditable and extensible as QualityRules was.

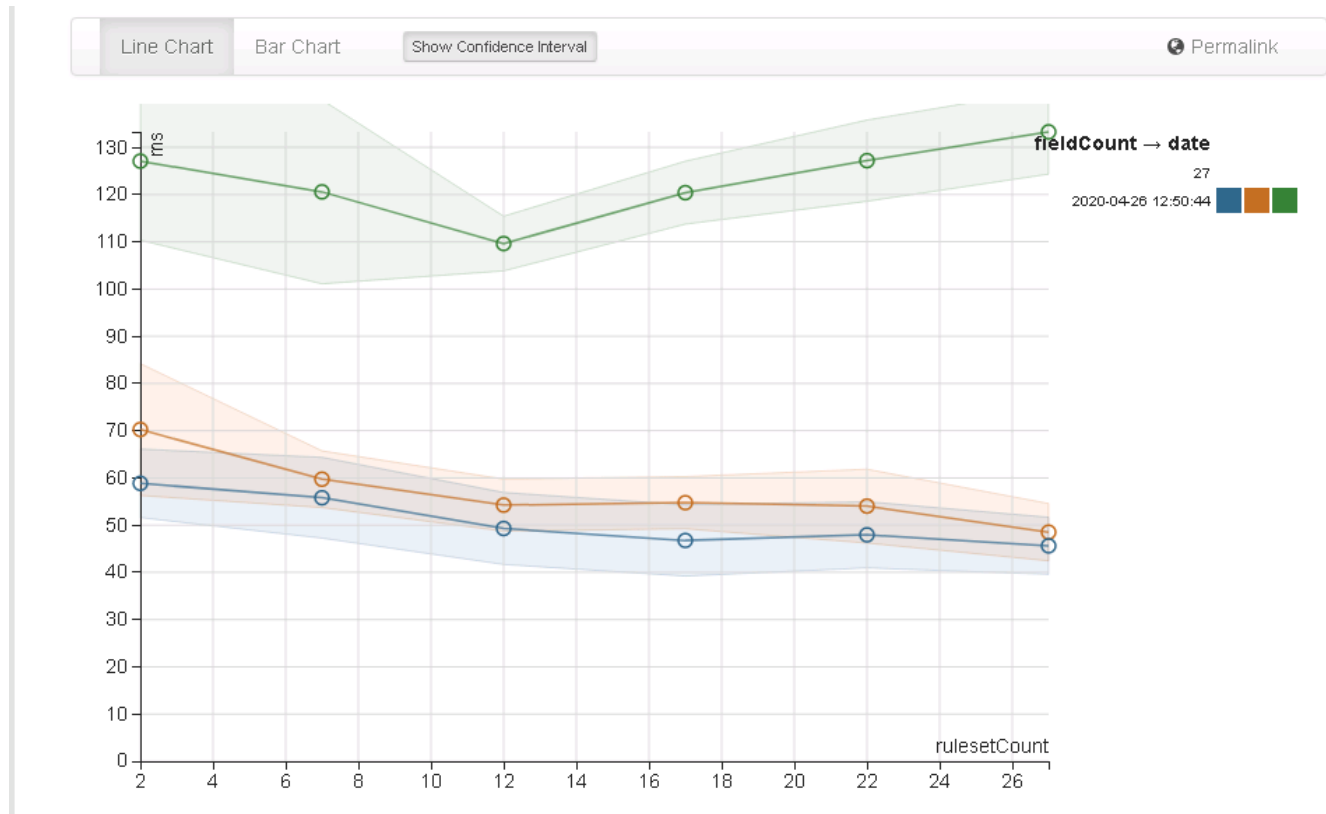
Last update: January 16, 2025 13:21:08

Created: January 16, 2025 13:21:08

## 3.2 Performance Choices

### 3.2.1 How should rules be evaluated?

Performance wise there is a clear winner as to approach for generating results:



The green row is using the map function which is unfortunately the most straightforward to program. The blue is the baseline of processing a row without DQ and the orange is using withColumn.

withColumn can use UDFs or inbuilt Catalyst style functions - the latter giving better performance and ability to more naturally integrate with spark, [this review echos the findings](#) and hinting at the effects of catalyst.

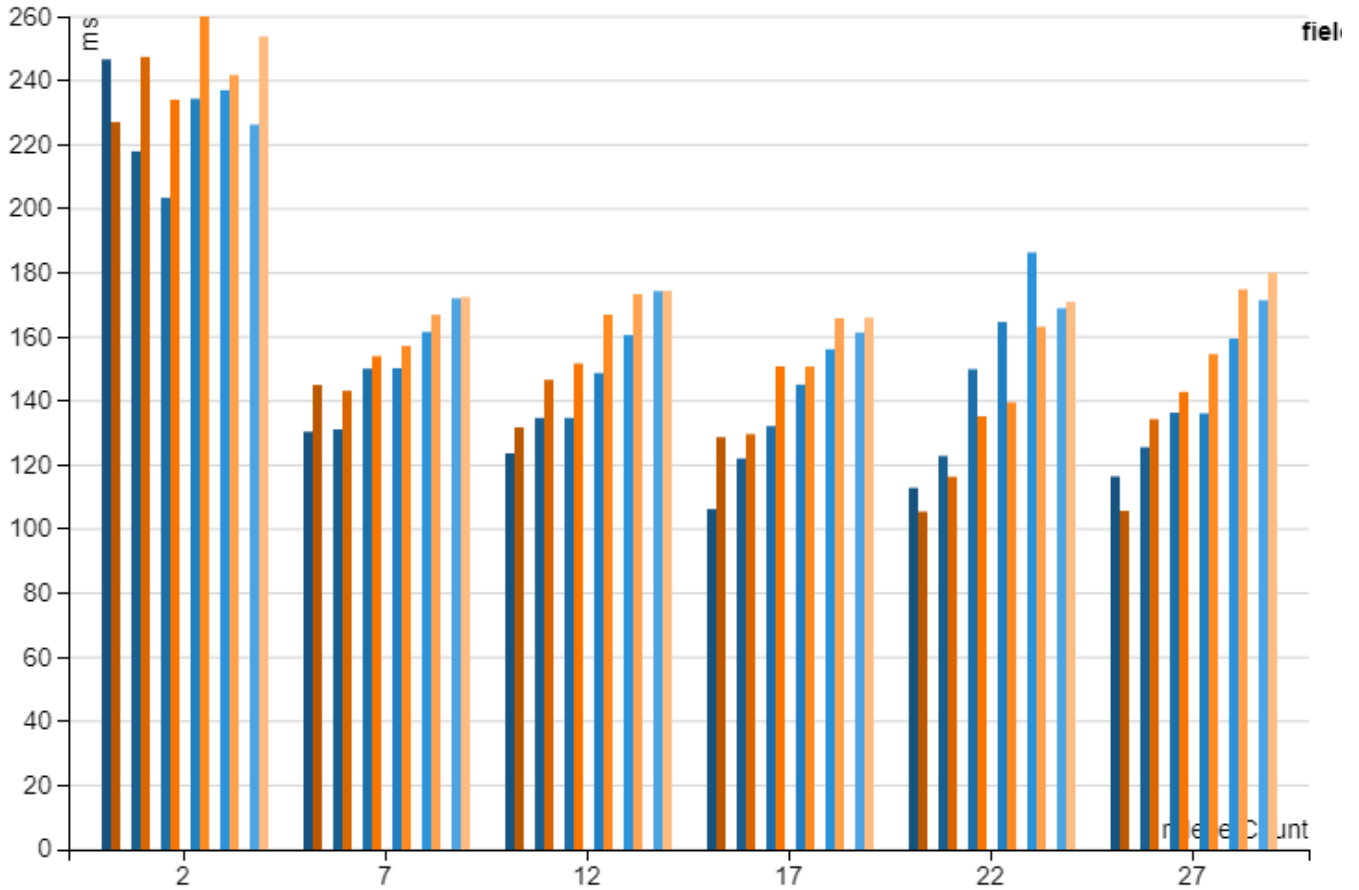
**Overall storage winner is nested columns**, it has lower storage costs, is as fast as json to serialize (via an Expression) and faster to query with predicate push down support for faster filtering. Details of the analysis are below.

#### Note

Using withColumn is strongly discouraged, it very quickly introduces performance issues in spark code, prefer to use select and the Quality transform functions. A large part of the performance hit for using UDFs over Expressions is due to the conversion from user types to InternalRow - this cannot be avoided.

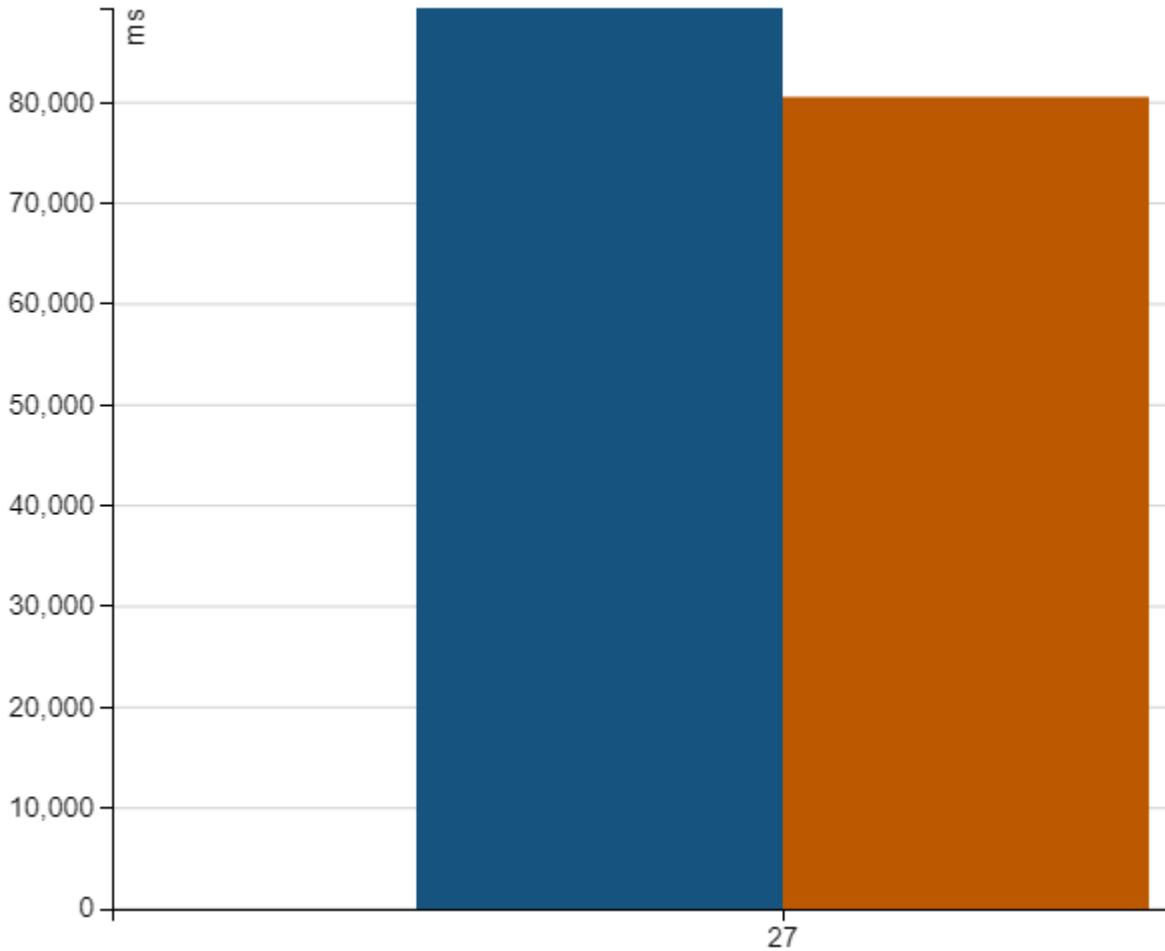
#### Catalyst Expression Performance

This diagram illustrates the overhead of cost of using Expressions using a simulated complexity of rule suites with increasing number of column checks ( c here is the column number, for a simple even check ): ( $\$c \% 2$ ) = 0



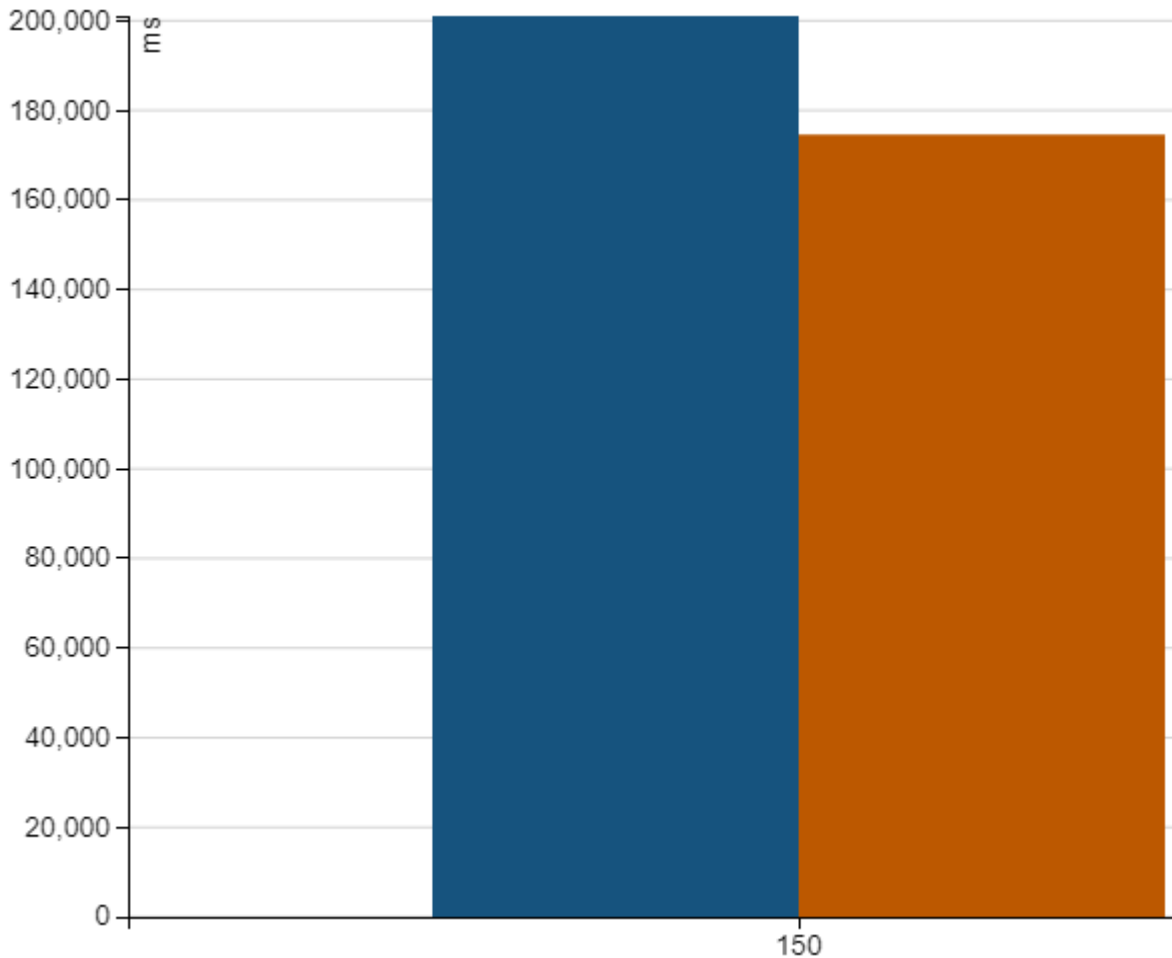
This measurement against 1k rows shows for the last column 230ms for 27 rules each with 27 columns applied, i.e. 0.23 ms per row for 84 rules total (albeit simple rules) on a single 4 core machine (24G heap). Orange representing the default compiled evaluations.

However, this doesn't illustrate very well how things can scale. Running the 27 rules against 1m rows we see:



with a mean time of 80,562ms for 1m rows that's 0.08ms per row for 27 rules, again orange representing the default options for compilation. Conversely, the same test run against 1m rows without rules has a mean of 14,052 - so 66,510ms overhead for processing 27m rules (i.e. 0.0025ms per simple rule).

Stepping the complexity up a bit to 150 columns at 100k (24G ram) with a baseline no rules time of 15,847ms. Running with rules gives:



so for compiled at a mean of 174,583ms we have 15m rules run at 0.011ms per rule. So although increased rule count obviously generates more work the overhead is still low per each rule even with larger counts and the benefit of the default (orange) compilation is visible (see the note at the bottom for when this may not be the case).

When using RuleEngineRunners you should try to re-use output expressions (RunOnPassProcessor) wherever possible to improve performance.

#### Sometimes Interpreted Is Better

For very large complex rules (tested sample is 1k rules with over 50k expressions - over 30s compilation for a show and write) compilation can dominate time, as such you can set `forceRunnerEval` to true on RuleRunner and RuleEngineRunner to skip compilation. While compilation can be slow the execution is heavily optimised with minimal memory allocation, as such you should balance this out when using huge RuleSuites.

#### Disabling compilation entirely is not a great idea

Disabled generation, via `ruleRunner(ruleSuite, compileEvals = false, forceRunnerEval = true)`, takes 208,518ms for 150 rules over 100k data - 34s longer than the default, this of course adds up fast over millions of rows.

Last update: January 16, 2025 13:21:08

Created: January 16, 2025 13:21:08

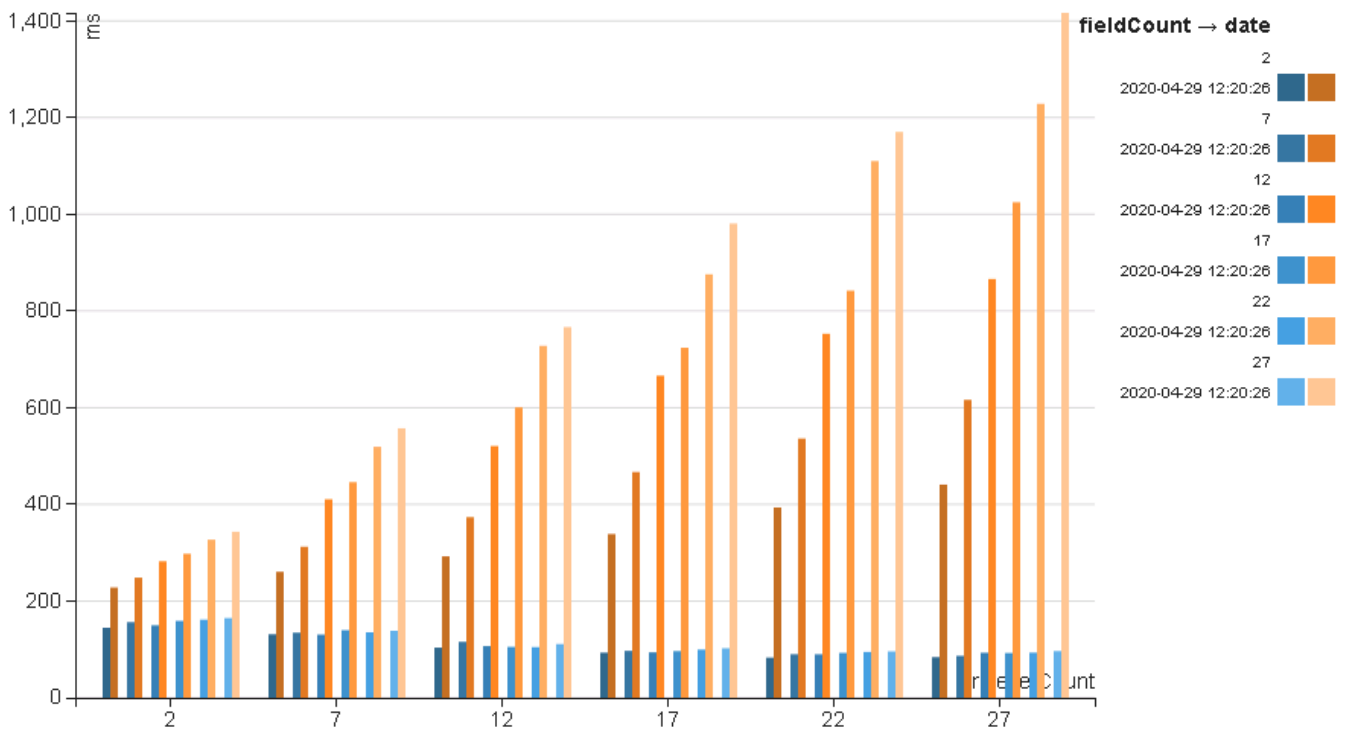
### 3.2.2 How should rule results be stored? - JSON vs Structures

**Note**

While Jackson is faster than circe serialization for JSON it doesn't serialize easily so only used for comparison as its the fastest possible serialization framework.

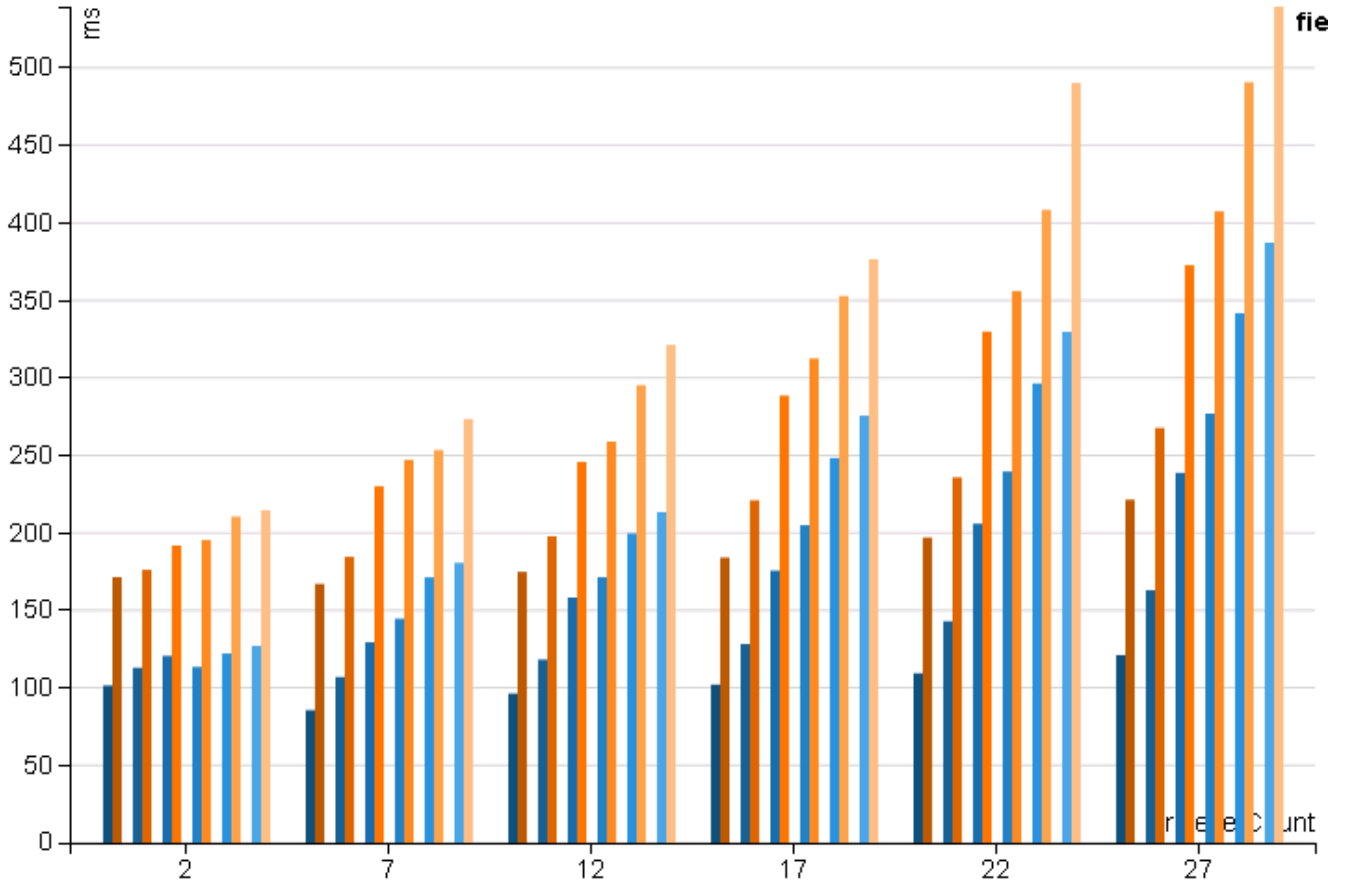
#### UDF Created Structures

When serializing rule results to Nested Rows via UDF struct creation (shown as Orange) the results are very expensive, the more complex the rule setup the worse the performance. In comparison Jackson (shown as blue) keeps a low cost as it's just a string (the cost instead is in parsing, storage and filtering)



#### Expression Created Structures

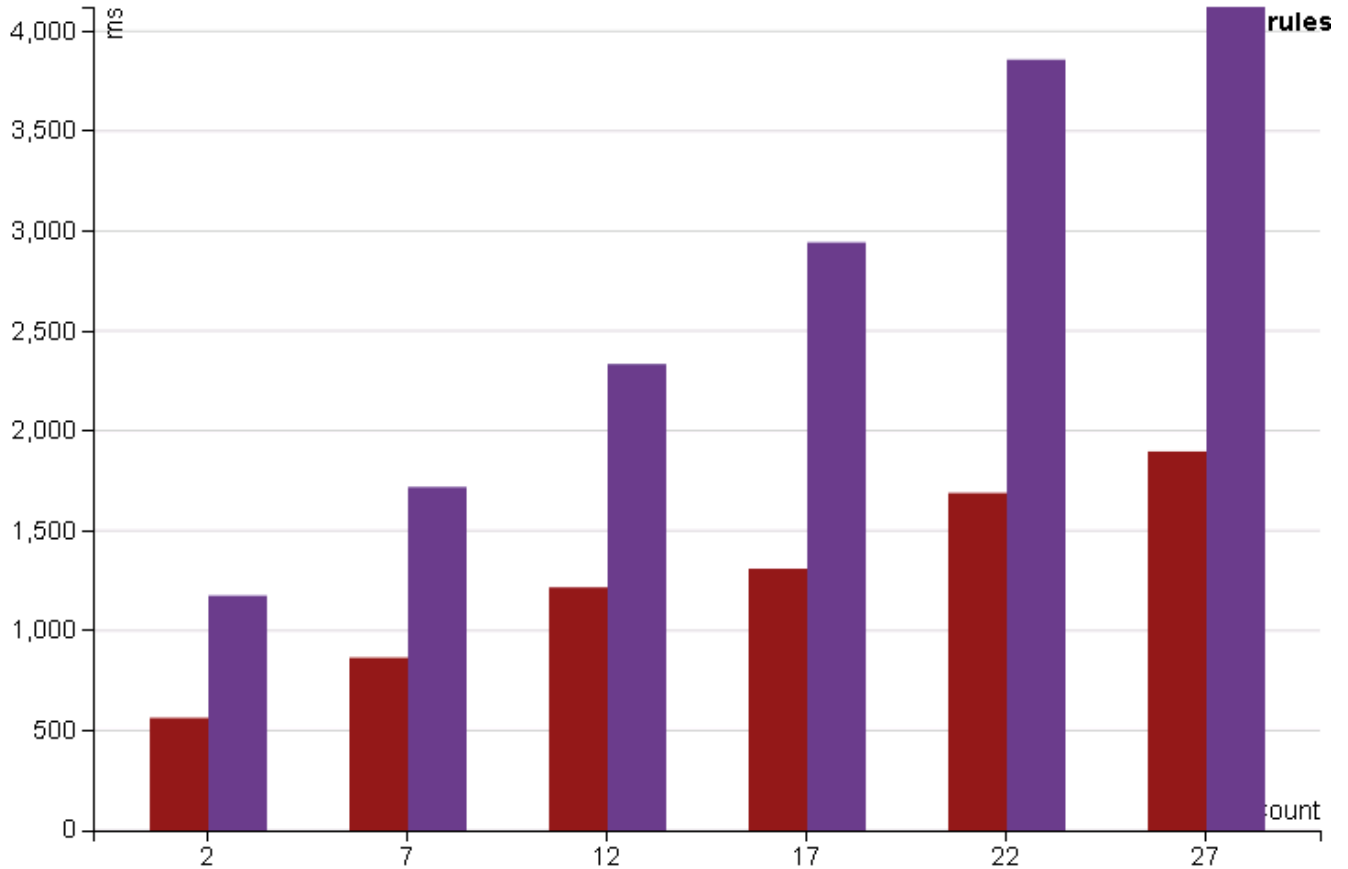
When serializing rule results with a custom Expression (shown as orange, using eval only - without custom compilation), Jackson (shown as blue) based serialisation loses it's clear lead with Expressions closing the gap as complexity increases:



**Filtering Costs**

Filtering on a nested column with deep queries (shown in red) is as expected faster the same query with a json structure. Nested predicates can be pushed down to the underlying storage for efficient querying.





**Note**

Depending on the Databricks runtime used the benefit from separating the overallResult field to a top level field can be 10-20% faster. While each new release of Spark and DBR closes this gap it is recommended to use addOverallResultsAndDetailsF to split the fields.

This not only improves filter speed but also benefits with a simpler filter sql.

**Structure Model - storage costs**

A naive structure representing RuleSuite, RuleSet and Rule results is actually less efficient than storage of JSON, however the current compressed model used by Quality has low overhead for even complex results.

Last update: January 16, 2025 13:21:08

Created: January 16, 2025 13:21:08

## 3.3 Changelog

---

### 0.1.3.1 3rd December, 2024

- #68 - Test setup improvements for running testShades on Fabric (reduced logging and share Databricks behaviour)
- #69 - Use different scopes for OSS testShade builds for Fabric testing

### 0.1.3 4th October, 2024

- #53 - Docs parser is now more forgiving, empty descriptions are tolerated and normal scaladoc syntax is allowed
- #50 - typedExpressionRunner - audited capture of expressions with the same type
- #51 - Spark 3.5.0 support - NOTE ViewLoaderAnalysisException and MissingViewAnalysisException now have Exception causes
- #27 - Delta 3.0.0 (Spark 3.5.0) support - compatible version
- #55 - DBR 14.0/1 - Snake Yaml 2.0 support
- #58 - Migrate custom runtime usage to Shim
- #59 - DBR 13.3 LTS support
- #57 - DBR 14.3 support
- #61 - Use sparkutils frameless for 3.5, 13.3, 14.x builds - Due to encoding and shim changes this frameless fork version is not binary compatible with typelevel frameless proper
- #62 - SPARK-47509 workaround for Subqueries in lambdas - most common patterns are supported with 4.0 / 14.3 DBR
- #63 - Use actual struct functions where possible for drop\_field/update\_field functions - required due to 14.3 DBR introduced plan on local relations
- #66 - Bug fix - softFail result handling was double encoded - softFail result type is changed to double (breaking)
- #65 - Bug fix - Incorrect OverallResult and string result processing

### 0.1.2.1 4th September, 2023

Maven Central build issues, code wise the same as 0.1.2.

### 0.1.2 4th September, 2023

- #48 - Bug fix - Enable Sub Queries in all runner types

### 0.1.1 9th July, 2023

- #42 - Improve expression runner to store yaml, unlike json, to\_yaml and from\_yaml allow complete support for roundtripping of Spark data types

### 0.1.0 10th June, 2023

- #29 - Quality OptimzerRule's run with Databricks sql display
- #35 - agg\_expr and associated lambda support in the functions package
- #36 - improved update\_field, added drop\_field based on the Spark withField (3.4.1 impl)
- #34 - simplified quality package usage, column functions are now under the functions package.

- #32 - expressionRunner - saves the results of expressions as strings, suitable for aggregate statistics
- #28 - rule\_result function - retrieves a rule result directly from a dq or expressionRunner result
- #15 - Addition of the loadXConfigs and loadX functions for maps and blooms, simplifying configuration management
- #24 - Remove saferId / rowid functions - use unique\_id where required
- #18 - ViewLoader - simple view configuration via DataFrames
- #30 - 3.3.2 and 3.4.1 builds - simple version bumps
- #20 - 3.5.0 starting support

#### 0.0.3 17th June, 2023

- #25 - Use builtIn function registration by default - allows global views to be created using Quality functions

#### 0.0.2 2nd June, 2023

- #16 - Remove winutils requirements for testing and usage
- #13 - Support 3.4's sub query usage in rules/trigger, output expressions and lambdas
- #12 - Introduce the use of underscores instead of relying on camel case for function sql names, inline with Spark built-in functions
- #10 - Base64 functions added for RowID encoding and decoding via base64 (more suitable for BI tools)
- #9 - Add AsymmetricFilterExpressions with AsUUID and IDBase64 implementation, allows expressions used in field selects to be reversed, support added for optimiser rules through the SparkExtension
- #8 - Add set syntax for easier defaulting sql, removing duplicative cruft from intention
- #7 - SparkSessionExtension to auto register Quality functions - does not work in 2.4, starting with this release 2.4 support is deprecated
- #6 - Simple as\_uuid function
- #5 - Spark 3.4 and DBR 12.2 LTS support
- #4 - comparableMaps / reverseComparableMaps functions, allowing map comparison / set operations (e.g. sort, distinct etc.)

#### 0.0.1 8th March, 2023

Initial OSS version.

(many internal versions in between)

#### the Quality exploration starts 25th April, 2020

Start of investigations into how to manage DQ more effectively within Spark and the mesh platform.

Last update: January 16, 2025 13:21:08

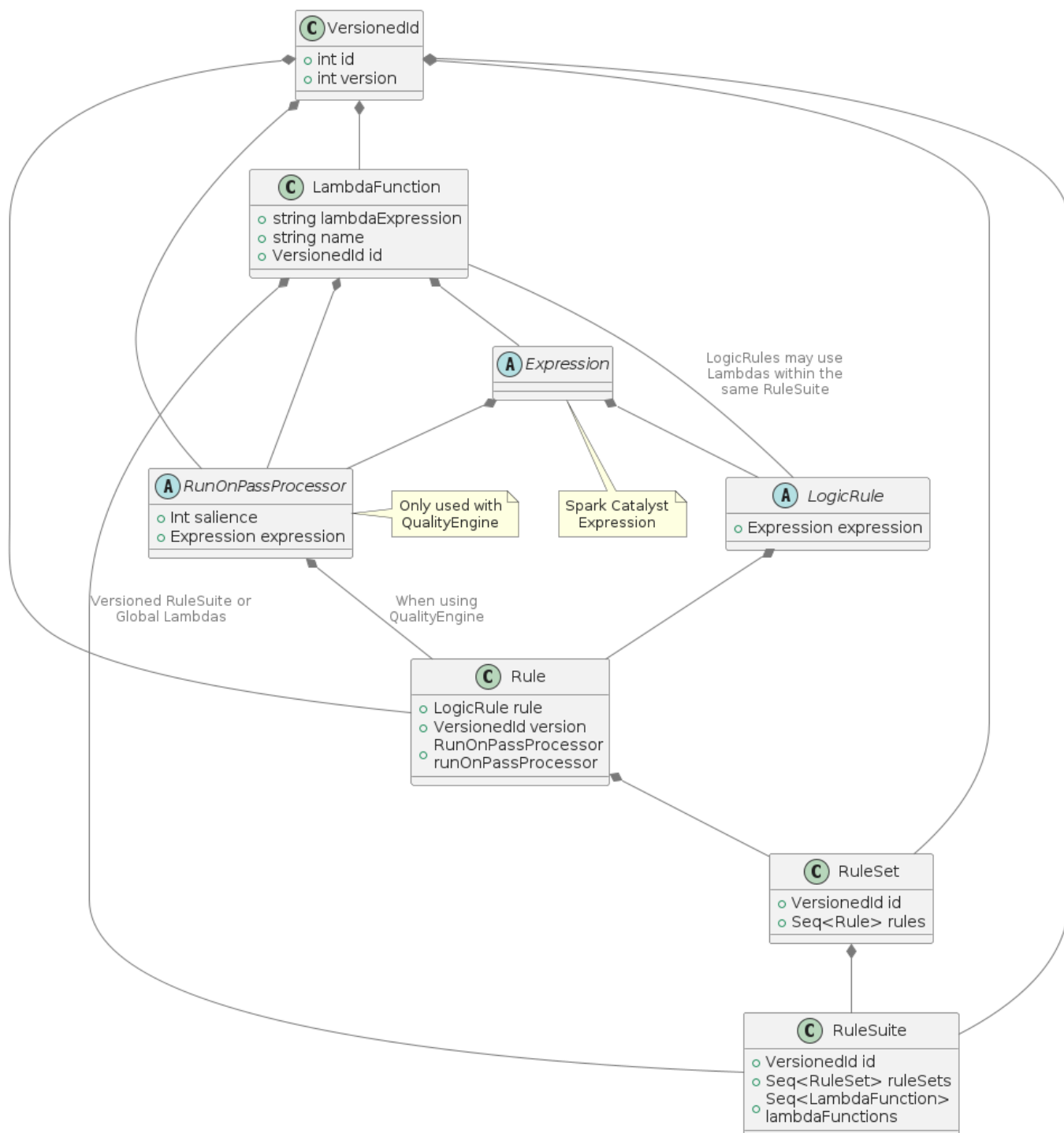
Created: January 16, 2025 13:21:08

## 4. Model

### 4.1 Rule Model

#### 4.1.1 Rules

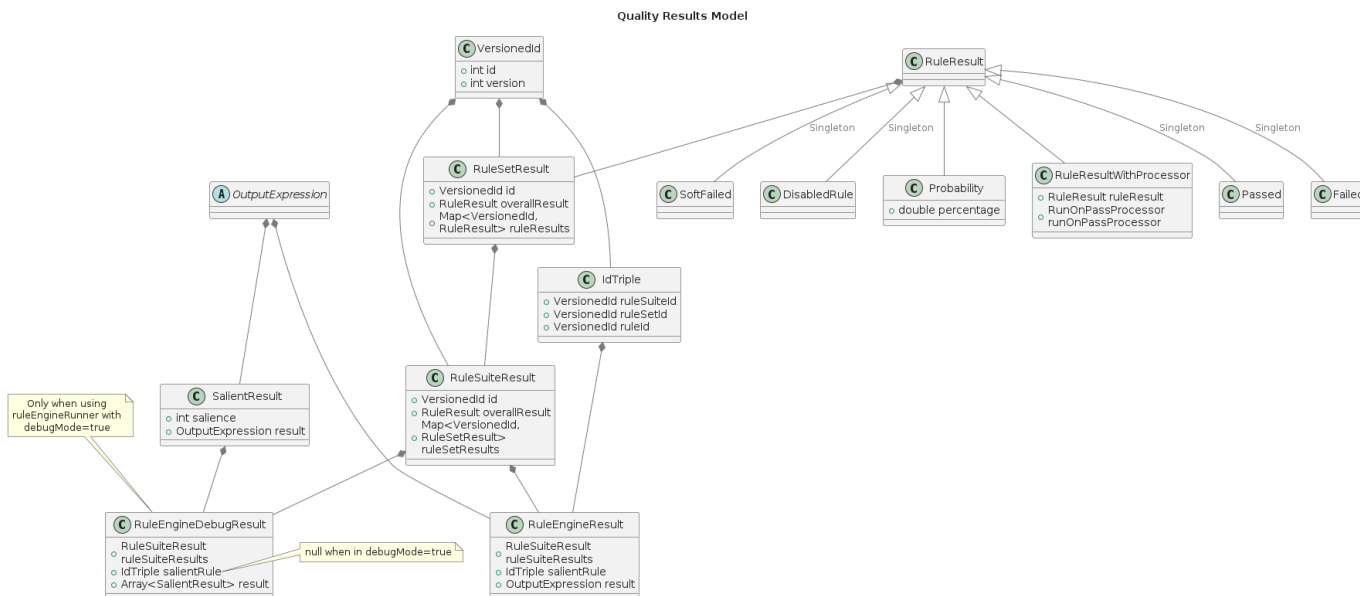
Quality RuleSuite Class Model



VersionedIDs are used throughout, changes to a Rule should imply a new Rule version, a new RuleSet version and a new RuleSuite version.

RunOnPassProcessor (output expressions) should only be provided when using the ruleEngineRunner and are treated, like Lambdas, as top level unique concepts. You should organise using output expressions wherever possible as it's not only easier to conceptualise but it's also faster.

### 4.1.2 Rule Results



- SoftFailed results do not cause the RuleSet or RuleSuite to fail
- DisabledRule results also do not cause the RuleSet or RuleSuite to fail but signal a rule has been disabled upstream
- Probability results with over 80 percent are deemed to have Passed, you may override this with the RuleSuite.withProbablePass function after creating the RuleSuite.

RuleResultWithProcessor is only used when using the ruleEngineRunner and is not returned in the column, rather the result of the expression is - shown above as call to "data".

Last update: January 16, 2025 13:21:08

Created: January 16, 2025 13:21:08

## 4.2 Storage Model

---

Nested columns, with nested columns, this lets you use Spark SQL to do filters and have predicate pushdown. Sample filter:

```
df.select(expr("filter(map_values(DataQuality.ruleSetResults),
ruleSet -> size(filter(map_values(ruleSet.ruleResults),
result -> probability(result) > 0.3 )) > 0)").as("filtered"))
```

actual type:

```
struct<id: LongType, overallResult: IntegerType,
ruleSetResults: map<LongType,
struct<overallResult: IntegerType,
ruleResults: map<LongType, IntegerType>>>>
```

Alternatively when creating with `addOverallResultsAndDetails` you have the

```
overallResult: IntegerType
```

moved to the top level, leaving

```
details: struct<id: LongType,
ruleSetResults: map<LongType,
struct<overallResult: IntegerType,
ruleResults: map<LongType, IntegerType>>>>
```

### 4.2.1 Where have all the VersionIds and RuleResults gone?

In order to optimise storage and marshalling the VersionId parts are packed into a single LongType. RuleResults are similarly encoded into an IntegerType:

- Failed => FailedInt // 0
- SoftFailed => SoftFailedInt // -1
- Disabled => DisabledInt // -2
- Passed => PassedInt // 100000
- Probability(percentage) => (percentage \* PassedInt).toInt

When the developer wishes to retrieve the objects they may use the encoders directly:

```
// frameless is used to encode
import frameless._
// imports the encoders for RuleSuiteResult
import com.sparkutils.quality.implicit._
// derive an encoder for the pair with a user type and the RuleSuiteResult for a given row
implicit val enc = TypedExpressionEncoder[(TestIdLeft, RuleSuiteResult)]
// select the fields needed for the user type and the DataQuality result (or details with RuleResult, RuleSuiteResultDetails for separate overall results and details)
val ds = df.selectExpr("named_struct('left_lower', `1`, 'left_higher', `2`)", "DataQuality").as[(TestIdLeft, RuleSuiteResult)]
```

the developer can then interegate the data quality results alongside their relevant data.

---

Last update: January 16, 2025 13:21:08

Created: January 16, 2025 13:21:08

## 4.3 Meta Rulesets?

---

Quality introduces a "Meta Ruleset" approach for added automation. Meta Rule sets evaluate each column of a DataFrame to see if a Rule should be generated for that column.

Null checks, type checks etc. may all be applied generically without laboriously copying the rule for each applicable column, just define a single argument lambda expression. In order for this to work and be extensible you require stable ordering for each column used.

```
// if you wish to use Meta Rule Sets
val metaRuleSets = readMetaRuleSetsFromDF(metaRuleDF,
// an sql filter of the schema from a provided dataframe - name,
//datatype (as DDL) and nullable can be filtered
  col("columnFilter"),
// single arg lambda to apply to all fields from the column filter
  col("ruleExpr"),
  col("ruleSetId"),
  col("ruleSetVersion"),
  col("ruleSuiteId"),
  col("ruleSuiteVersion")
)

// make sure we use the correct rule suites for the dataset, e.g.
val filteredRuleSuites: RuleSuiteMap = Map(ruleSuiteId -> rules)

val theDataframe = sparkSession.read.parquet("theFilePath")

// Guarantee each column always returns the same unique position
val stablePositionsFromColumnNames: String => Int = ???

// filter theDataframe columns and generate rules for each Meta
// RuleSet and re-integrate them
val newRuleSuiteMap = integrateMetaRuleSets(theDataframe, filteredRuleSuites,
  metaRuleSets, stablePositionsFromColumnNames)
```

An optional last parameter for `integrateMetaRuleSets` allows transformation of a generated column dataframe, allowing joins with other lookup tables for the column definition or applicable rules to generate for the column for example.

---

Last update: January 16, 2025 13:21:08

Created: January 16, 2025 13:21:08

## 5. Advanced Usage

---

### 5.1 Bloom Filters

---

Bloom Filters are probabilistic data structures that, for a given number of items and a false positive probability (FPP) provides a `mightContain` function. This function *guarantees* that if an item is not in the bloom filter it will return false, however if it returns true this is to a probability defined by the FPP value.

In contrast to a Set which requires the items (or at least their hash values) to be stored individually blooms make use of multiple blocks and apply bit setting based on hashes of the input value over some function. These resulting blocks and bitsets are far smaller in memory and storage usage than a typical set. For example it's possible to store hundreds of millions of items within a bloom and still keep within a normal Java byte array boundary.

This act of using bit flipping also allows blooms to be or'd for the same size and FPP, which is great for aggregation functions in Spark.

Whilst blooms are great the guarantees break when:

1. The number of items far exceeds the initial size used to create the bloom - false is still guaranteed to not be present but the true value will no longer represent FPP, the bloom has degraded
2. The number of bits required to store the initial number of items at the FPP exceed what can be represented by the bloom algorithm.

If you attempt to store billions of items within a bloom at a high FPP you will quickly fall foul of 2, and this is easily done with both the Spark `stats` package and the current bloom filters on Databricks. This makes them next to useless for large dataset lookups on *typical* bloom implementations.

#### 5.1.1 How does Quality change this?

---

It can't change the fundamental laws of bloom filters, if you use the number of bits up your bloom filter is next to useless. You *can* however add multiple Java byte arrays and bucket the hashes across them. This works great up to about 1.5b items in a typical aggregation function within Spark, however Spark only allows a maximum of 2Gb for an `InternalRow` - of which aggregates are stored in.

Quality provides three bloom implementations the Spark `stats` package, `small` - which buckets within an `InternalRow` (1.2-1.5b items max whilst maintaining FPP) - and `big` which doesn't use Spark aggregations to store the results of aggregations but rather a shared file system such as Databricks `dbfs`.

Both the `small` and `big` bloom functions use Parquet's bloom filter implementation which both significantly faster and has better statistical properties than Sparks/Guavas or Breezes.

#### 5.1.2 What are Bloom Maps?

---

Bloom Maps are identifiers to a bloom filter. The examples below show how to create the key is to use the `SparkBloomFilter` or `bloomFilter` functions to provide the value and the FPP is required.

```
registerBloomMapAndFunction(bloomFilterMap)
```

Both registers the Bloom Map, the `small_bloom` and `big_bloom` aggregation functions and the `probabilityIn` function.

#### 5.1.3 Using the Spark stats package

---

```
// generate a dataframe with an id column
val df = sqlContext.range(1, 20)
// build a bloomfilter over the id's
val bloom = df.stat.bloomFilter("id", 20, 0.01)
// get the fpp and build the map
val fpp = 1.0 - bloom.expectedFpp()
val bloomFilterMap = SparkSession.active.sparkContext.broadcast( Map("ids" -> (SparkBloomFilter(bloom), fpp)) )
```



```
// register the map for this SparkSession
registerBloomMapAndFunction(bloomFilterMap)
// lookup the result of adding column's a and b against that bloom filter for each row
otherSourceDF.withColumn("probabilityInIds", expr("probability_in(a + b, 'ids')"))
```

The stats package bloomFilter function has severe limitations on a single field and does not allow expressions but through the SparkBloomFilter lookup function is integrated with Quality anyway.

### 5.1.4 Using the Quality bloom filters

The small and big bloom functions take a single expression parameter however it can be built from any number of fields or field types using the hash\_with function.

- smallBloom( column, expected number of items, fpp ) - an SQL aggregate function which generates a BloomFilter Array[Byte] for use in probabilityIn or rowId:

```
val aggrow = orig.select(expr(s"small_bloom(uuid, $numRows, 0.01)").head())
val thebytes = aggrow.getAs[Array[Byte]](0)
val bf = bloomLookup(thebytes)
val fpp = 0.99
val blooms: BloomFilterMap = Map("ids" -> (bf, fpp))
```

- bigBloom( column, expected number of items, fpp ) - can only be run on large memory sized workers and executors and can cover billions of rows while maintaining the FPP:

```
// via the expression
val interim = df.selectExpr(s"big_bloom($bloomOn, $expectedSize, $fpp, '$bloomId')").head.getAs[Array[Byte]](0)
val bloom = com.sparkutils.quality.BloomModel.deserialize(interim)
bloom.cleanupOthers()

val blooms: BloomFilterMap = Map("ids" -> (bloomLookup(bloom), fpp))

// via the utility function, defaults to 0.01 fpp
val bloom = bloomFrom(df, "id", expectedSize)
val blooms: BloomFilterMap = Map("ids" -> (bloomLookup(bloom), 1 - bloom.fpp))
```

In testing the bigBloom creation over 1.5b rows on a small 4 node cluster took less than 8m to generate, using a resulting bloom however is far easier to load and distribute and constant time for lookups. Whilst the actual big bloom itself cannot be directly broadcast only the file location of the resulting bloom is and each node on the cluster directly loads it from the ADLS (or other hopefully fast store for the multiple GBs).

To change the base location for blooms use the sparkSession.sparkContext.setLocalProperty("sparkutils.quality.bloom.root") to specify the location root.

### 5.1.5 Bloom Loading

The interface and config row data types is similar to that of [View Loader](#) with [loadBloomConfigs](#) accepting these additional columns:

```
bigBloom: Boolean, value: String, numberOfElements: BIGINT, expectedFPP: DOUBLE
```

- bigBloom specifies which function should be used, when true the bigBloom algorithm will be used, when false the smallBloom.
- value is an expression string suitable for the bloom filter, the expression will not parse if the type is unsupported, complex types will need special handling but it's typically possible to convert to an array of longs via hash functions such as [hash\\_with](#).
- numberOfElements is an estimated upper bound for the size of the bloom filter, too low, and many false possible results will be generated
- expectedFPP is the starting percentage of expected percentage of false positives produced, or what can be tolerated, a value of 0.01 implies 99% of the time you get a "should contain" result it will be accurate, and 0.01% of the time it won't be. When using too small an numberOfElements the expected fpp cannot be met. bigBloom will attempt to use both to derive the optimal size with the probability that the resulting fpp is different.

```
import sparkSession.implicitly._

val (bloomConfigs, couldNotLoad) = loadBloomConfigs(loader, config.toDF(), expr("id.id"), expr("id.version"), Id(1,1),
  col("name"),col("token"),col("filter"),col("sql"), col("bigBloom"),
```

```
col("value"), col("numberOfElements"), col("expectedFPP")
)
val blooms = loadBlooms(bloomConfigs)
```

with `couldNotLoad` holding a set of configuration rows that aren't possible to load (neither a `DataFrameLoader` token nor an sql).

`loadBlooms` will process the resulting dataframe using `bigBloom`, `value`, `numberOfElements` and `expectedFPP` to create the appropriate blooms. Views first loaded via view loader are available when executing the sql column (when token is null).

## 5.1.6 Expressions which take expression parameters

- `probability_in( content to lookup, bloomfilterName )` - returns the fpp value of a filter lookup against the bloomFilter with `bloomFilterName` in the registered `BloomFilterMap`, which works with the Spark stats package, small and big blooms.

---

Last update: January 16, 2025 13:21:08

Created: January 16, 2025 13:21:08

## 5.2 Map Functions

A typical use case for processing DQ rules is that of cached value processing, reference data lookups or industry code checks etc.

Quality's map functions reproduce the result of joining datasets but guarantees in memory operation only once they are loaded, no merges or joins required. However, for larger data lookups either [Bloom Filters](#) should be preferred or simply use joins.

Similarly, for cases involving more logic than a simple equality check you must use joins or starting in 3.4 (DBR 12.2) scalar sub queries, see [View Loader](#) for a way to manage the loading of views.

### 5.2.1 Map Loading

The interface and config row data types is similar to that of [View Loader](#) with `loadMapConfigs` accepting these additional columns:

```
val (mapConfigs, couldNotLoad) = loadMapConfigs(loader, config.toDF(), expr("id.id"), expr("id.version"), Id(1,1),
  col("name"), col("token"), col("filter"), col("sql"), col("key"), col("value")
)

val maps = loadMaps(mapConfigs)
```

with `couldNotLoad` holding a set of configuration rows that aren't possible to load (neither a `DataFrameLoader` token nor an sql).

`loadMaps` will process the resulting dataframe using key and value as sql expressions in exactly the same way as `mapLookupFromDFs`, as such they must be valid expressions against the source dataframe. Views first loaded via view loader are available when executing the sql column (when token is null).

### 5.2.2 Building the Lookup Maps Directly

In order to lookup values in the maps Quality requires a map of map id's to the actual maps.

```
// create a map from ID to a MapCreator type with the dataframe and underlying
// columns, including returning structures / maps etc.
val lookups = mapLookupsFromDFs(Map(
  "countryCode" -> ( () => {
    val df = countryCodeCCY.toDF("country", "funnycheck", "ccy")
    (df, new Column("country"), functions.expr("struct(funnycheck, ccy)"))
  } ),
  "ccyRate" -> ( () => {
    val df = ccyRate.toDF("ccy", "rate")
    (df, new Column("ccy"), new Column("rate"))
  } )
))
registerMapLookupsAndFunction(lookups)
```

In the `countryCode` map lookup case we are creating a map from country to a structure (funnycheck, ccy), whereas the `ccyRate` is a simple lookup between ccy and it's rate at point of loading.

Map creation is not lazy and is forced at time of calling the `registerMap...` function, for streaming jobs this may be unacceptable. Prefer to use new map id's and merge old sets if you need to guarantee repeated calls to `registerMapLookupsAndFunctions` are working with up to date data.

It's possible to have multiple fields used as the key, where all must match, just use `struct` in the same way as the value example above.

#### Note

Repeated calls and streaming use cases have not been thoroughly tested, the Spark distribution method guarantees an object can be broadcast but no merging is automatically possible, users would be required to code this by hand.

## 5.2.3 Expressions which take expression parameters

---

- `map_lookup('map name', x)` - looks up `x` against the map specified in `map name`, full type transparency from the underlying map values are supported including deeply nested structures

```
// show the map of data 'country' field against country code and get back the currency  
df.select(col("**"), expr("map_lookup('countryCode', country).ccy")).show()
```

- `map_contains('map name', x)` - returns true or false if an item is present as a key in the map
- 

Last update: January 16, 2025 13:21:08

Created: January 16, 2025 13:21:08

## 5.3 Aggregation Functions

### 5.3.1 Aggregation Functions

Quality adds a number of aggregation primitives to allow building across dataset functionality similar to Deequ and others but philosophically staying true to the customisation approach used throughout the library.

You can aggregate using any number of `agg_expr` columns:

- `agg_expr(ddl type, filter, lambda sum, lambda result)` - allows filter expressions to be used to build up aggregated BIGINT (long) results with lambda functions, leveraging simple lambda functions (note count is currently only BIGINT / LongType):

```
// generates with an long id column from 1 to 20
val df = sparkSession.range(1, 20)
// filter odd numbers, add the them together with sumWith lambda for the
// sum, then using resultsWith lambda variables divide them by the count
// of filtered rows
val res = df.select(expr("agg_expr('BIGINT', id % 2 > 0, sum_with(sum -> sum + id), "+
  "results_with( (sum, count) -> sum / count ) )").as("aggExpr"))
res.show() // will show aggExpr with 10.0 as a result,
// sum + count would show 110..
```

The filter parameter lets you select rows you care about to aggregate, but does not stop you aggregating different filters in different columns and still process all columns in a single pass. The sum function itself does the aggregation and finally the result function yields the last calculated result. Both of these functions operate on MAPs of any key and value type.

Spark lambda functions are incompatible with aggregation wrt. type inference which requires that the type is specified to `agg_expr`, it defaults to `bigint` when not specified.

The [ExpressionRunner](#) provides a convenient way to manage multiple `agg_expr` aggregations in a single pass action via a `RuleSuite`, just like DQ rules.

### 5.3.2 Aggregation Lambda Functions

- `sum_with( lambda entry -> entry )` - processes for each matched row the lambda with the given `ddl` type which defaults to `LongType`
- `results_with( lambda (sum, count) -> ex )` - process results lambda with sum and count types passed in.
- `inc( [expr] )` - increments the current sum either by default 1 or by `expr` using type `LongType`
- `meanF()` - simple mean on the results, expecting sum and count type `Long`:

```
// generates with an long id column from 1 to 20
val df = sparkSession.range(1, 20)
// filter odd numbers, add the them together with inc lambda for the sum, then using meanF expression to divide them by the count of filtered rows
val res = df.select(expr("agg_expr(id % 2 > 0, inc(id), meanF() )").as("aggExpr"))
res.show() // will show aggExpr with 10.0 as a result, sum + count would show 110..
```

- `map_with( keyExpr, x )` - uses a map to group via `keyExpr` and apply `x` to each element:

```
// a counting example expr - group by and count distinct equivalent
expr("agg_expr('MAP<STRING, LONG>', 1 > 0, map_with(date || ', ' || product, entry -> entry + 1 ), results_with( (sum, count) ->
sum ) )").as("mapCountExpr")
// a summing example expr with embedded if's in the summing lambda for added fun
expr("agg_expr('MAP<STRING, DOUBLE>', 1 > 0, map_with(date || ', ' || product, entry -> entry + IF(ccy='CHF', value, value * ccyrates) ),
return_sum() )").as("mapSumExpr")
```

- `return_sum()` - just returns the sum and ignores the count param, expands to `results_with( (sum, count) -> sum)`

### 5.3.3 Column DSL

The same functionality is available in the functions package e.g.:

```
import com.sparkutils.quality.functions._
val df: DataFrame = ...
df.select(agg_expr(DecimalType(38,18), df("dec").isNotNull, sum_with(entry => df("dec") + entry ), return_sum) as "agg")
```

## 5.3.4 Type Lookup and Monoidal Merging

This section is very advanced but may be needed in a deeply nested type is to be aggregated.

### Type Lookup

`agg_expr`, `map_with`, `sum_with` and `return_sum` all rely on type lookup. The implementation uses sparks in-built DDL parsing to get types, but can be extended by supplying a custom function when registering functions e.g.:

```
registerQualityFunctions(parseTypes = (str: String) => defaultParseTypes(str).orElse( logic goes here ) /* Option[DataType] */)

```

### Monoidal Merging

Unlike type lookup custom merging could well be required for special types. Aggregation (as well as `MapMerging` and `MapTransform`) require a Zero value the `defaultZero` function can be extended or overwritten and passed into `registerFunctions` as per `parseTypes`. The `defaultAdd` function uses itself with an extension function parameter in order to supply map value monoidal associative add.

#### Note

This works great for Maps and default numeric types but it requires custom monoidal 'add' functions to be provided for merging complex types.

Whilst zero returns a value to use as zero you may need to recurse for nested structures of zero, add requires defining Expressions and takes a left and right Expression to perform it:

```
DataType => Option[( Expression, Expression ) => Expression]

```

#### Warning

This is an area of functionality you should avoid unless needed as it often requires deep knowledge of Spark internals. There be dragons.

Last update: January 16, 2025 13:21:08

Created: January 16, 2025 13:21:08

## 5.4 User Defined Functions

Users may register Lambda Functions using the sql lambda syntax:

```
val rule = LambdaFunction("multValCCY", "(theValue, ccy) -> theValue * ccy", Id(1,2))
registerLambdaFunctions(Seq(rule))
```

they may be then called in rules (or within any SQL expressions), in this case value and ccyrate from the data frame are provided to the function as parameters theValue and ccy:

```
val ndf = df.withColumn("newcalc", expr("multValCCY(value, ccyrate)"))
```

The function parameter and return types are derived during the analysis phase, this may lead to errors if types do not match the expressions upon an action only, such as writing or calling show.

### Note

Whilst you are free to add lambdas when not using a RuleSuite the library will not ensure that only functions registered as part of a RuleSuite are used in rules, such hygiene is necessarily left to the user.

LambdaFunctions may have any number of parameters e.g. given a *greaterThan* lambda:

```
(param1, param2) -> param1 > param2
```

you would be able to call it with two expressions

```
greaterThan(col1, col2)
```

Single argument lambdas should not use brackets around the parameters and zero argument lambdas use no input or ->. In all cases the lambda can use the attributes from the surrounding dataframe - it's effectively global, you cannot use variables from surrounding / calling lambdas.

### Don't use 'current'... as a lambda variable name on 2.4

Bizarrely this causes the parser to fail on 2.4 only, no more recent version suffers this. Same goes for left or right as names.

### 5.4.1 What about default parameter or different length parameter length Lambdas?

To define multiple parameter length lambdas just define new lambdas with the same name but different argument lengths. You can freely call the same lambda name with different parameters e.g.:

```
val rule = LambdaFunction("multValCCY", "multValCCY(value, ccyrate)", Id(1,2))
val rule1 = LambdaFunction("multValCCY", "theValue -> multValCCY(theValue, ccyrate)", Id(2,2))
val rule2 = LambdaFunction("multValCCY", "(theValue, ccy) -> theValue * ccy", Id(3,2))
registerLambdaFunctions(Seq(rule, rule1, rule2))

// all of these should work
df.withColumn("newcalc", expr("multValCCY()"))
df.withColumn("newcalc", expr("multValCCY(value)"))
df.withColumn("newcalc", expr("multValCCY(value, ccyrate)"))
```

### 5.4.2 Higher Order Functions

As Lambda's in Spark aren't first class citizens you can neither partially apply them (fill in parameters to derive new lambdas) nor pass them into a lambda.

Quality experimentally adds three new concepts to the mix:

1. Placeholders - `_()` - which represents a value which still needs to be filled (partial application)
2. Application - `callFun()` - which, in a lambda, allows you to apply a function parameter
3. Lambda Extraction - `_lambda_()` - which allows Lambdas to be used with existing Spark HigherOrderFunctions (like `aggregate`)

Unfortunately the last piece of that puzzle of returning a higher order function isn't currently possible.

Putting together 1 and 3 (straight out of the test suite):

```
val plus = LambdaFunction("plus", "(a, b) -> a + b", Id(1,2))
val plus3 = LambdaFunction("plus3", "(a, b, c) -> a + b + c", Id(2,2))
val hof = LambdaFunction("hof", "func -> aggregate(array(1, 2, 3), 0, _lambda_(func))", Id(3,2))
registerLambdaFunctions(Seq(plus, plus3, hof))

import sparkSession.implicits._

// attempt to dropping a reference to a function where simple lambdas are expected.
// control
assert(6 == sparkSession.sql("SELECT aggregate(array(1, 2, 3), 0, (acc, x) -> acc + x) as res").as[Int].head)
// all params would be needed with multiple arities
assert(6 == sparkSession.sql("SELECT aggregate(array(1, 2, 3), 0, _lambda_(plus(_('int'), _('int')))) as res").as[Int].head)
// can we play with partials?
assert(21 == sparkSession.sql("SELECT aggregate(array(1, 2, 3), 0, _lambda_(plus3(_('int'), _('int'), 5))) as res").as[Int].head)
// hof'd
assert(6 == sparkSession.sql("SELECT hof(plus(_('int'), _('int')))) as res").as[Int].head)
```

In the above example you can see type's being specified to the placeholder function, this is needed because, similar to `aggExpr`, Spark can't know the types until after they are evaluated and resolved. This does have the benefit of keeping the types at the partial application site. *The default placeholder type is Long / Bigint.*

The `lambda` function extracts a fully *resolved* underlying Spark LambdaFunction, which means the types must be correct as it is provided to the function (use the placeholder function to specify types). Similarly, you use the `lambda` function to extract the Spark LambdaFunction from a user provided parameter (as seen in the `hof` example).

The `aggregate` function only accepts two parameters for its accumulator, but in the `plus3` example we've 'injected' in a third. Partially applying the `plus3` with the value 5 in it's "c" position leaves the two arguments as new function. Quality ensures the necessary transformations are done before it hits the `aggregate` expression.

Great, but can I use it with `aggExpr`? Yep:

```
select aggExpr('DECIMAL(38,18)', dec IS NOT NULL, myinc(_()), myretsum(_(), _())) as agg
```

allows you to define the `myinc` and `myretsum` elsewhere, you don't need to use the `lambda` function with `aggExpr`.

What about application? Using `callFun`:

```
val use = LambdaFunction("use", "(func, b) -> callFun(func, b)", Id(4,2))
```

the first parameter must be the lambda variable referring to your function followed by the necessary parameters to pass in. `Func` in this case has a single parameter but of course it could have started with 5 and had 4 partially applied. Again you don't need to use `lambda` to pass the functions further down the line:

```
val deep = LambdaFunction("deep", "(func, a, b) -> use(func, a, b)", Id(2,2))
```

Deep takes the function and simply passes it to `use` where the `callFun` exists.

Finally, you can also further partially apply your lambda variables:

```
val plus2 = LambdaFunction("plus", "(a, b) -> a + b", Id(3,2))
val plus3 = LambdaFunction("plus", "(a, b, c) -> plus(plus(a, b), c)", Id(3,2))
val papplyt = LambdaFunction("papplyt", "(func, a, b, c) -> callFun(callFun(func, _(), _(), c), a, b)", Id(2,2))
registerLambdaFunctions(Seq(plus2, plus3, papplyt))

import sparkSession.implicits._

assert(6L == sparkSession.sql("select papplyt(plus(_(), _(), _()), 1L, 2L, 3L) as res").as[Long].head)
```

Here the `callFun` directly applies the function afterwards but you could equally pass it to other functions.



```
callFun(callFun(func, _(), _(), c), a, b)
```

can then be read as partially apply func (plus with 3 arguments) parameter 3 with the lambda variable c, creating a new two argument function. Then call that function with the a and b parameters. Useless in this case perhaps but it should be illustrative.

All that's missing is returning lambdas:

```
val plus2 = LambdaFunction("plus", "(a, b) -> a + b", Id(3,2))
val plus3 = LambdaFunction("plus", "(a, b, c) -> plus(plus(a, b), c)", Id(3,2))
val retLambda = LambdaFunction("retLambda", "(a, b) -> plus(a, b, _())", Id(2,2))
registerLambdaFunctions(Seq(plus2, plus3, retLambda))

import sparkSession.implicit._

assert(6L == { val sql = sparkSession.sql("select callFun(retLambda(1L, 2L), 3L) as res")
  sql.as[Long].head})
```

here the user function retLambda returns the plus with 3 arity applied over a and b, leaving a function of one arity to fill. The top level callFun then applies the last argument (c).

#### It's sql only

As you can create your own functions based on Column transformations the functionality is not extended to the dsl where there are better host language based solutions.

#### It is experimental

Although behaviour has been tested with compilation and across the support DBRs it's entirely possible there are gaps in the trickery used.

A good example of the experimental nature is the `_()` function, it's quite possible that is taken by Spark at a later stage.

#### **lambda drop in call arguments to transform\_values and transform\_keys don't work on 3.0 and 3.1.2/3**

They pattern match on List and not seq, later versions fix this. To work around this you must explicitly use lambdas for these functions.

#### **Do not mix higher order functions with subqueries**

Per [SPARK-47509](#) subqueries within a HOF can lead to correctness issues, such usage is not supported

### 5.4.3 Controlling compilation - Tweaking the Quality Optimisations

Normal Spark LambdaFunctions, NamedLambdaVariable and HigherOrderFunctions aren't compiled, this is - in part - due to the nature of having to thread the lambda variables across the Expression tree and calling bind.

At the time of codegen bind has already been called however so the code is free to create a new tree just for compilation. Quality makes use of this and replaces all NamedLambdaVariables expressions with a simple variable in the generated code.

NamedLambdaVariables also use AtomicReferences, which was introduced to avoid a tree manipulation task - see [here](#) for the code introduction. AtomicReferences are slower for both writes and reads of non-contended variables. As such Quality does away with this in its compilation, the `exprId` is sufficient to track the actual id.

Quality only attempts to replace it's own FunN and reverts to using NamedLambdaVariables if it encounters any other HigherOrderFunction. Where it can replace it uses NamedLambdaVariableCodeGen with an ExprId specific code snippet.

You can customise this logic via implementing:

```

trait LambdaCompilationHandler {
  /**
   *
   * @param expr
   * @return empty if the expression should be transformed (i.e. there is a custom solution for it). Otherwise return the full set of NamedLambdaVariables
   found
   */
  def shouldTransform(expr: Expression): Seq[NamedLambdaVariable]

  /**
   * Transform the expression using the scope of replaceable named lambda variable expression
   * @param expr
   * @param scope
   * @return
   */
  def transform(expr: Expression, scope: Map[ExprId, NamedLambdaVariableCodeGen]): Expression
}

```

and supplying it via the environment variable, System.property or via `sparkSession.sparkContext.setLocalProperty` `quality.lambdaHandlers` using this format:

```
name=className
```

where name is either a fully qualified class name of a HigherOrderFunction or of a lambda (FunN) function.

The default `org.apache.spark.sql.qualityFunctions.DoCodegenFallbackHandler` allows you to disable any optimisation for a HigherOrderFunction. It can be used to disable all FunN optimisations with:

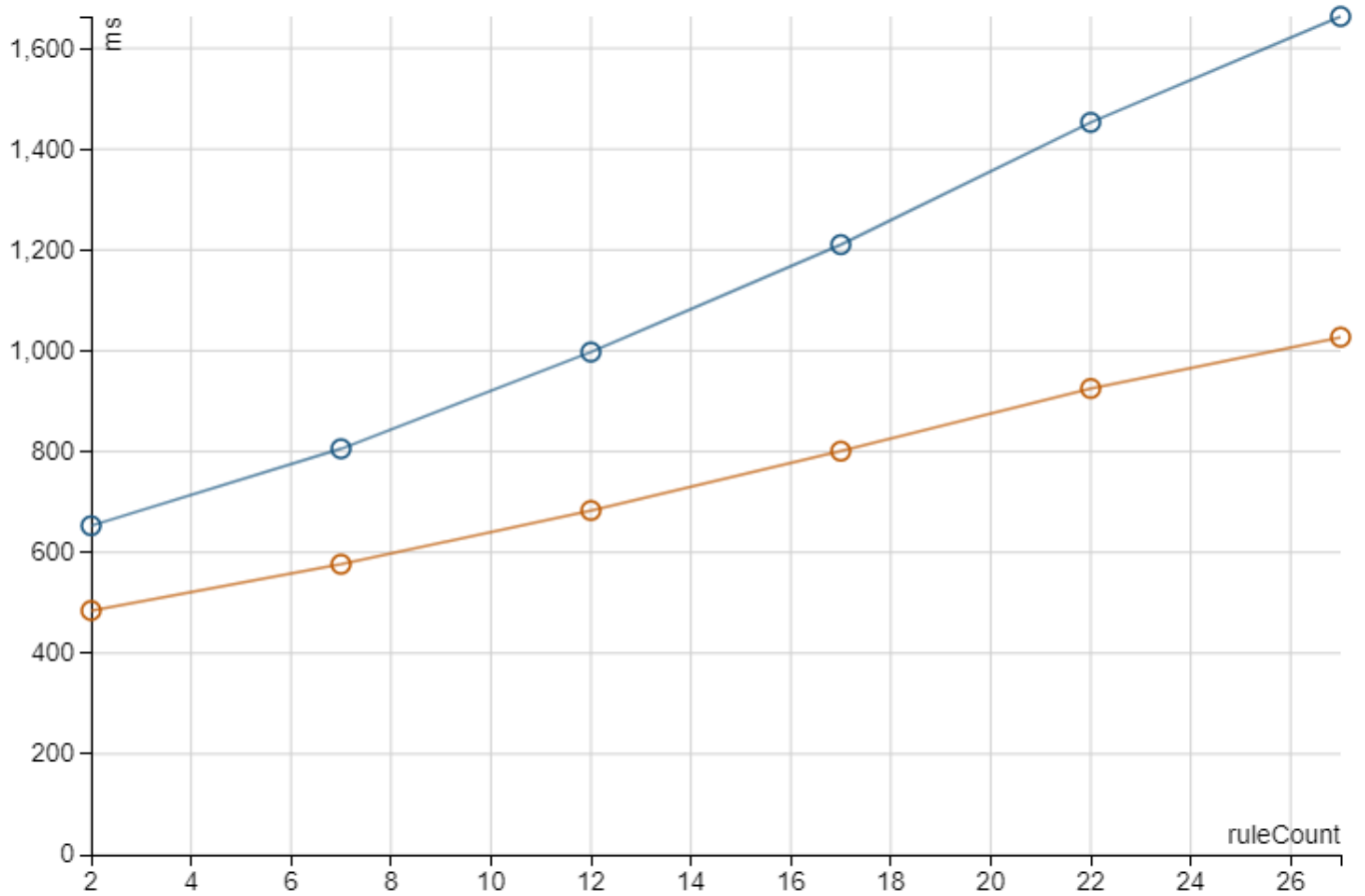
```
-Dquality.lambdaHandlers=org.apache.spark.sql.qualityFunctions.FunN=org.apache.spark.sql.qualityFunctions.DoCodegenFallbackHandler
```

Alternatively if you have a hotspot with any inbuilt HoF such as `array_transform`, `filter` or `transform_values` you could replace the implementation for compilation with your own transformation. e.g.:

```
-Dquality.lambdaHandlers=org.apache.spark.sql.catalyst.expressions.TransformValues=org.mine.SuperFastTransformValues
```

### Why do all this?

Speed, it's up to 40% faster. `LambdaRowPerfTest`, in the test suite, generates an increasing number of lambdas and only runs over 10k rows but still sees clear benefits e.g. (orange is compiled lambdas):



This difference is already noticeable with a small increment function in a folder:

```
thecurrent -> updateField(thecurrent, 'thecount', thecurrent.thecount + 1)
```

The difference is typically higher with nested lambdas. Should your compilation time exceed the execution time you may wish to disable compilation via the fallback handler.

Last update: January 16, 2025 13:21:08

Created: January 16, 2025 13:21:08

## 5.5 PRNG Functions

---

The existing Spark rand function has a few of limitations:

- It generates doubles
- Has a fixed implementation
- Only provides reseeding on each new partition ignoring splittable / jumpable algorithms

The Quality pseudorandom generators produce either 128bit values (two longs) or a configurable number of bytes and, as a result, do not suffer precision issues, they also leverage [RandomSource](#) implementations allowing users to choose the algorithm used.

In addition, by leveraging `.isJumpable` and the resulting [jump function](#) the Quality prng function can benefit from the implementations own approach to managing overlapping intervals across the cluster.

### 5.5.1 RNG Expressions

---

- `rng_bytes( [number of bytes to fill - defaults to 16], [RandomSource RNG Impl - defaults to 'XO_RO_SHI_RO_128_PP'], [seed - defaults to 0] )` - Uses commons rng to create byte arrays, implementations can be plugged in, when seed is 0 the RNG's default seed generator is used. Note when a given RNG `isJumpable` then it will use jumping for each partition where possible both improving speed and statistical results.
- `rng( [RandomSource RNG Impl - defaults to 'XO_RO_SHI_RO_128_PP'], [seed - defaults to 0] )` - Uses commons rng to create byte arrays, implementations can be plugged in, when seed is 0 the RNG's default seed generator is used. Note when a given RNG `isJumpable` then it will use jumping for each partition where possible both improving speed and statistical results.
- `rng_uuid( expr )` - processes expr with either byte arrays or two longs into a UUID string, it's counterpart [long\\_pair\\_from\\_uuid](#) generates two longs

---

Last update: January 16, 2025 13:21:08

Created: January 16, 2025 13:21:08

## 5.6 Row ID Functions

Row ID functions are at least 160bit, made of a lower base id and two longs. There are 4 distinct implementations:

1. Random Number, a 128bit payload based on XO\_RO\_SHI\_RO\_128\_PP
2. Field Based, 128bit MD5 payload based on fields e.g. for DataVault style approaches
3. Provided, an Opaque ID payload, typically 128bit, provided by some upstream system fields (MD5 is not used under the hood)
4. Guaranteed Unique, 160bit ID based on Twitters snowflake IDs at Spark scale - requires MAC addresses to be stable and unique on a driver

These IDs use the "base" field to provide extensibility but comparisons must include all three fields (or more longs should they be added).

From a performance perspective you should transform the column to make the structure into top-level fields via

```
selectExpr("**", "myIDField.*").drop("myIDField")
```

- `rng_id('prefix')` - generates a Random 128bit number with each column name prefixed for easy extraction
- `unique_id('prefix')` - generates a unique 160bit ID with each column name prefixed for easy extraction
- `field_based_id('prefix', 'messagedigest', exp1, exp2, *)` - generates a digest based e.g. 'MD5' identifier based on an expression list
- `provided_id('prefix', longArrayBasedExpression)` - generates a providedID based on supplied array of two longs expression
- `murmur3_id('prefix', exp1, exp2, *)` - generates and ID using hashes based on a version of murmur3 - not cryptographically secure but fast
- `id_equal('left_prefix', 'right_prefix')` - (SQL only) tests the two top level field IDs by adding the prefixes, note this does allow predicate push-down / pruning etc. (NB further versions may be added when 160bit is exceeded)

### Id's can be 96-bit or larger multiples of 64

The algorithm you chose to use for generating Ids will change the length of underlying longs, `idEqual` cannot be used on different lengths but you can easily replace this with a lambda of the correct length.

### There are many different hash impls

The `fieldBasedID` functions have a family of alternatives for `MessageDigest`, ZA based hashes and Guava based Hashers. See [SQL Functions](#) and look for the Hash and ID tags.

### fieldBasedID with MD5 - Seems far slower than other approaches

It's definitely slower than either `uniqueId` or `rngID`. If your use case allows it, consider `murmur3ID` if this is sufficient, it's slightly faster as is the XXH3 za hash. MD5 was chosen based on the ubiquity of implementations including on backends (e.g. allowing `datavault` style approaches).

### Guaranteed Unique ID - How?

In order to lock down a globally (within a Spark using routable IP address space) ID you need to make sure a given machine, point in time and partition (thread) is unique.

Your networking / vendor setup should guarantee the machines MAC Address is unique for your Spark Driver, Spark guarantees that the partition id, although re-usable, does not get re-used within a Spark cluster and for a given ms since an epoch we can lock down a range of row numbers. This leaves the following storage model:

```
gantt
  dateFormat YYYY-MM-DD
  axisFormat %j
  title Bit Layout
  todayMarker off

  section First Int
  Unique ID Type and Reserved Space :active, start, 2021-01-01, 8d
  First 3 Bytes of MAC : startmac, after start, 24d

  section First Long
  Last 3 Bytes of MAC :endmac, after startmac, 24d
  Spark Partition :partition, after endmac, 32d
  First 8 bits of Timestamp :starttimestamp, after partition, 8d

  section Second Long
  Rest of Timestamp :done, endtimestamp, after starttimestamp, 33d
  Row number in Partition :rowid, after endtimestamp, 31d
```

When Spark starts a new partition the uniqueID expression resets the timestamp and partition and each row evaluates the rowid. When 32bits of rowid would be hit the timestamp is reset and the count resets to 0 allowing over a billion rows per ms.

This approach is faster than rngID but also means rows written to the same partitions have statistically incrementing id's allowing Parquet statistical ranges to be used for all three values in predicate pushdowns.

Last update: January 16, 2025 13:21:08

Created: January 16, 2025 13:21:08

## 5.7 QualityRules

### 5.7.1 Engine

Quality provides a basic rule engine for data quality rules the output of each rule however is always translated to RuleResult, encoded and persisted for audit reasons.

The ruleEngineRunner function however allows you to take an action based on the passing of a rule and, via salience, choose the most appropriate output for a given row.

You can understand QualityRules as a large scale auditable SQL case statement with "when" being the trigger rule and the "then" as the output expression.

RuleSuites are built per the normal DQ rules however a RuleResultProcessor is supplied:

```
val ruleResultProcessor =
  RunOnPassProcessor(salience, Id(outputId, outputVersion), RuleLogicUtils.expr("array(account_row('from', account), account_row('to',
'other_account1'))"))
val rule = Rule(Id(id, version), expressionRule, ruleResultProcessor)
val ruleSuite = RuleSuite(Id(ruleSuiteId, ruleSuiteVersion), Seq(
  RuleSet(Id(ruleSetId, ruleSetVersion), Seq(rule)
)))

val rer = ruleEngineRunner(ruleSuite,
  DataType.FromDDL("ARRAY<STRUCT<`transfer_type`: STRING, `account`: STRING>>"))

val testDataDF = ...

val outdf = testDataDF.withColumn("together", rer).selectExpr("...", "together.result")
```

The ruleEngineRunner takes a DataType parameter that must describe the type of the result column type. An additional salientRule column is available that packs three the Id's that represent the ruleId chosen by salience. If this is null then *no* rule was triggered and the output column will also be null (verifiable via debug mode), if however there is an entry but the output is null then this signifies that the output expression produced a null.

The salientRule column may be pulled apart down to the id number and versions via the unpack expression or unpackIdTriple to unpack the lot in one go. If you are using frameless encoders these longs can be converted to a triple of Id's.

The salience parameter to the RunOnPassProcessor is used to ensure the lowest value is returned for a ruleSuite. It is the responsibility of the rule configuration to ensure there can only be one output.

All of the existing functionality, lambdas etc. can be used to customise the results and, as per the normal DQ processing, is run in-process across the clusters when the spark action is taken (like writing the dataframe to disk).

### Serializing

The serializing approach uses the same functions as normal DQ RuleSuites, the only difference is you should use toDS and provide the two additional ruleEngine parameters when reading from a DF:

```
val withoutLambdasAndOutputExpressions = readRulesFromDF(rulesDF,
  col("ruleSuiteId"),
  col("ruleSuiteVersion"),
  col("ruleSetId"),
  col("ruleSetVersion"),
  col("ruleId"),
  col("ruleVersion"),
  col("ruleExpr"),
  col("ruleEngineSalience"),
  col("ruleEngineId"),
  col("ruleEngineVersion")
)

val lambdas = ...

val outputExpressions = readOutputExpressionsFromDF(so.toDF(),
  col("ruleExpr"),
  col("functionId"),
  col("functionVersion"),
  col("ruleSuiteId"),
  col("ruleSuiteVersion")
)
```

```
val (ruleMap, missing) = integrateOutputExpressions(withoutLambdasAndOutputExpressions, outputExpressions)
```

The ruleExpr is only run for the lowest ruleEngineSaliency result of any passing ruleExpr. The missing result will contain any output expressions specified by a rule which do not exist in the output expression dataframe based by rulesuite id, if your rulesuite id is not present in the missing entries your RuleSuite is good to go.

The rest of the serialization functions to combine lambdas etc. work as per normal DQ rules allowing you to use lambda functions in your QualityRules output rules as well.

The result of toDS will contain the three ruleEngine fields, you can simply drop them if they are not needed.

## Debugging

The RuleResult's indicate if a rule has not triggered but in the case of multiple matching rules it can be useful to see which rules would have been chosen.

To enable this you can add the debugMode parameter to the ruleEngineRunner:

```
val rer = ruleEngineRunner(ruleSuite,
  DataType.fromDDL("ARRAY<STRUCT<`transfer_type`: STRING, `account`: STRING>>"),
  debugMode = true)
```

This changes the output column 'result' field type to:

```
ARRAY<STRUCT<`saliency`: INTEGER, `result`: ARRAY<ORIGINALRESULTTYPE>>
```

### Why do I have a null

There are two cases where you may get a null result:

1. no rules have matched (you can verify this as you'll have no passed() rules).
2. your rule actually returned a null (you can verify this by putting on debug mode, you'll see a saliency but no result)

## flatten\_rule\_results

```
val outdf = testDataDF.withColumn("together", rer).selectExpr("explode(flatten_rule_results(together)) as expl").selectExpr("expl.*")
```

This sql function behaves the same way as per flatten\_results, however there are now two structures to 'explode'. debugRules works as expected here as well.

## resolveWith

### Use with care - very experimental

The resolveWith functionality has several issues with Spark compatibility which may lead to code failing when it looks like it should work. Known issues:

1. Using filter then count will stop necessary attributes being produced for resolving, Spark optimises them out as count doesn't need them, however the rules definitely do need some attributes to be useful.
2. You may not select different attributes, remove any, re-order them, or add extra attributes, this is likely to cause failure in show'ing or write'ing
3. Spark is free to optimise other actions than just count, ymmv in which ones work.
4. The 0.1.0 implementation of update\_field (based on the Spark impl) does not work in some circumstances (testSimpleProductionRules, testSaliency will fail) - see [#36](#)



`resolveWith` attempts to improve performance of planning for general spark operations by first using a reduced plan against the source dataframe. The resulting Expression will have all functions and attributes resolved and is hidden from further processing by Spark until your rules actually run.

```
val testDataDF = ...

val rer = ruleEngineRunner(ruleSuite,
    DataType.fromDDL(DDL), debugMode = debugMode, resolveWith = resolveWith = Some(testDataDF))

val withRules = rer.withColumn("ruleResults", rer)

// ... use the rules
```

#### WHY IS THIS NEEDED?

For RuleSuites with 1000s of triggers the effort for Spark to prepare the rules is significant. In tests 1k rule with 50 field evaluations is already sufficient to cause a delay of over 1m for each action (show, write, count etc.) and the size of the data being processed is not relevant.

After building the action QualityRules scale and perform as expected, but that initial costs of 1m per action is significant as it can only be improved by higher spec drivers.

`resolveWith`, if it works for given use case, drastically reduces this cost, the above 1k example is a 30s evaluation up front and far less cost for each further action.

With the rather horrible 1k rule example the clock time of running 1k rows through 1k rules with a simple show, then count and write for actions was 6m15s on an Azure b4ms, using `resolveWith` brings this down to 1m30s for the same actions. Still not blazingly fast of course, but far more tolerable and becomes suitable for smaller batch jobs.

#### ANY REASON WHY I SHOULDN'T TRY IT?

Not really but for production use cases where your trigger and output rules complexity is low you should prefer to not use it, it's likely fast enough and this solution is very much experimental.

You definitely shouldn't use it when using relation or table fields in your expressions e.g. `table.field` this does not work (verify this by running `JoinValidationTest` using `evalCodeGens` instead of `evalCodeGensNoResolve`). There be dragons. This is known to fail on *all* OSS builds and OSS runtimes (up to and including 3.2.0). 10.2.dbr and 9.1.dbr *actually do work* running the tests in notebooks with `resolveWith` and relations (the test itself is not built for this however to ensure cross compilation on the OSS base).

#### forceRunnerEval

By default, QualityRules runs with an optimised wholestage codegen wherever possible. This works by breaking out the nested structure of a RuleSuite into multiple index, salience and id arrays which are fixed for the duration of an action. Whilst this reduces the overhead of array and temporary structure creation the compilation also unrolls the evaluation of trigger rules allowing jit optimisations to kick in.

Using large RuleSuites, however, may cause large compilation times which are unsuitable for smaller batches, as such you can force the interpreted path to be used by setting this parameter to true. Individual trigger and output expressions are still compiled but the evaluation will not be.

---

Last update: January 16, 2025 13:21:08

Created: January 16, 2025 13:21:08

## 5.7.2 Workflow

### Overview and terms

QualityRules is a matching engine which applies match/trigger rules to a Dataframe and, when these rules evaluate to passed (i.e. they match or trigger) output sql is run.

Only one trigger rule may produce output, so salience is used as a tie-breaker, the lowest salience wins.

#### **Aim to have unique salience for tie-breaking**

If you have multiple trigger rules with the same salience that both trigger the "winning" output chosen is non-deterministic, chose your salience wisely.

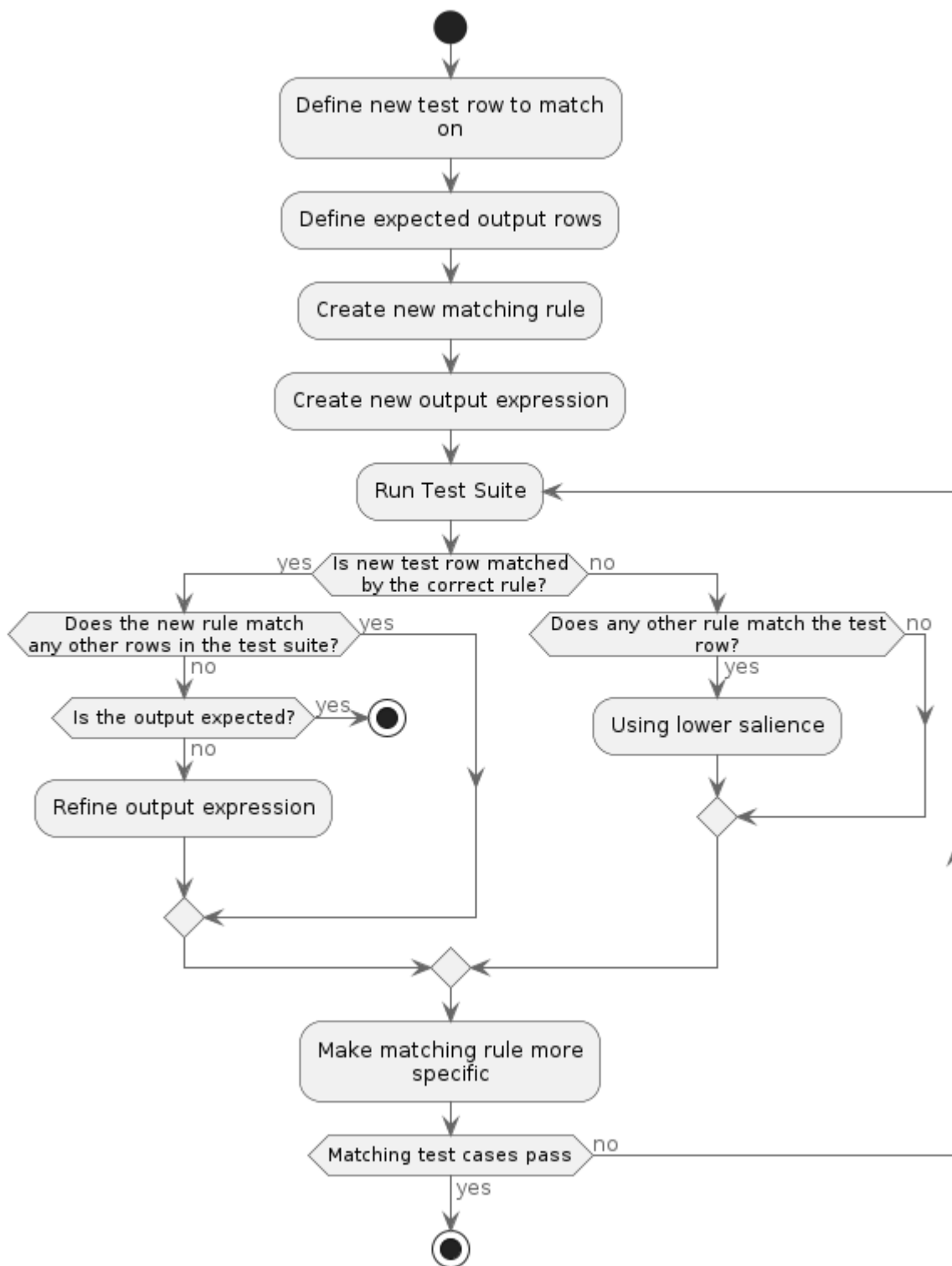
An alternative way to think of this is the trigger rules are your if and the output expressions are the when, from a logic perspective it may be helpful to think of them as output verbs - when this is true do that.

### Suggested approach to QualityRules management

- Keep unrelated rules in their own RuleSuites, making things easier to reason about
- Make commonly used lambdas or output expressions global
- Use descriptive verbs for your output expressions
- Keep duplication or complexity in lambdas
- Only use fields that change as parameters to those lambdas
- Always *start* with test data you want to match against *and* your expected output
- Run all test cases for your RuleSuite for any change, don't assume because your rule worked that others won't stop working
- Use the [validation and documentation](#) functionality to document your lambdas and verify you've not made simple mistakes - Spark errors aren't always easy to understand

This could be visualised as such:

### QualityEngine Rule Management



**Don't repeat yourself**

If you are typing the same trigger rule, output expression or even lambda text repeatedly - make another lambda and consider making it global

Last update: January 16, 2025 13:21:08

Created: January 16, 2025 13:21:08

## 5.8 QualityFolder

The ruleFolderRunner function uses the same data formats and structures as the ruleEngineRunner (with the exception of RuleFolderResult) however it allows you to "fold" results over many matching rules.

In contrast to ruleEngineRunner, which uses salience to select which output expression to run, ruleFolderRunner uses salience to order the execution of each matching output expression. To facilitate this OutputExpressions in the ruleFolderRunner must be lambdas with one parameter.

ruleFolderRunner takes a starter Column, which is evaluated against the row and then is passed as the parameter to the OutputExpression lambdas, in turn the result of these output lambdas is then fed in to the next matching OutputExpression and folded over until the last is run, which is returned.

When using debugMode you get the salience and each output returned in the resulting array, as with ruleEngineRunner the Encoder derivations for RuleFolderResult work with both T and Seq[(Int, T)] where the Int is salience.

RuleSuites are built per the normal DQ rules however a RuleResultProcessor is supplied with Lambda OutputExpressions:

```
val ruleResultProcessor =
  RunOnPassProcessor(salience, Id(outputId, outputVersion),
    RuleLogicUtils.expr("thecurrent -> update_field(thecurrent, 'account', concat(thecurrent.account, '_suffix' )"))
  )
val rule = Rule(Id(id, version), expressionRule, ruleResultProcessor)
val ruleSuite = RuleSuite(Id(ruleSuiteId, ruleSuiteVersion), Seq(
  RuleSet(Id(ruleSetId, ruleSetVersion), Seq(rule)
  )))

val rer = ruleFolderRunner(ruleSuite,
  struct($"transfer_type", $"account"))

val testDataDF = ...

val outdf = testDataDF.withColumn("together", rer).selectExpr("together.result")
```

You may use multiple path and expression combinations in the same call, allowing the change of multiple fields at once - this will be faster than nesting calls to updateField.

### Don't use 'current' for a variable on 2.4

It may be tempting to use 'current' as your lambda variable name, but this causes problems on 2.4 - every other version doesn't care.

### Don't use resolveWith on 2.4

2.4 will NPE using withResolve, this does not occur on more recent Spark versions

### Don't use select(\*, ruleFolderRunner)

Spark will not NPE using withColumn but will using select(expr(".\*"), ruleFolderRunner(ruleSuite)). In order to thread the types through the resolving needs an additional projection, if you must avoid withColumn (e.g for performance reasons) then you may specify the DDL via the useType parameter.

### 5.8.1 Set

Although the use of lambda expressions allows you full control of your output expression it can be a bit verbose. The common use case of defaulting is more easily expressed via the following syntax:

```
set( variable.path = expression to assign, variable2 = other expression, variable3 = expression using currentResult )
```

Only valid variable names and paths, followed by equal and valid expressions (however complex) are allowed.

The following two folder expressions are equivalent, indeed the set call is translated into the lambda:

```
set( account = concat(currentResult.account, '_suffix'), amount = 5 )
currentResult -> update_field(currentResult, 'account', concat(currentResult.account, '_suffix'), 'amount', 5 )
```

The set syntax defaults the name of the lambda variable to "currentResult" and removes the odd looking quotes around the variable names.

## 5.8.2 flatten\_folder\_results

```
val outdf = testDataDF.withColumn("together", rer).selectExpr("explode(flatten_folder_results(together)) as expl").selectExpr("expl.result")
```

This sql function behaves the same way as per `flatten_rule_results` with `debugRules` working as expected.

## 5.8.3 resolveWith

### Use with care - very experimental

The `resolveWith` functionality has several issues with Spark compatibility which may lead to code failing when it looks like it should work. Known issues:

1. Using filter then count will stop necessary attributes being produced for resolving, Spark optimises them out as count doesn't need them, however the rules definitely do need some attributes to be useful.
2. You may not select different attributes, remove any, re-order them, or add extra attributes, this is likely to cause failure in show'ing or write'ing
3. Spark is free to optimise other actions than just count, ymmv in which ones work.
4. The 0.1.0 implementation of `update_field` (based on the Spark impl) does not work in some circumstances (testSimpleProductionRules will fail) - see [#36](#)

`resolveWith` attempts to improve performance of planning for general spark operations by first using a reduced plan against the source dataframe. The resulting Expression will have all functions and attributes resolved and is hidden from further processing by Spark until your rules actually run.

```
val testDataDF = ....
val rer = ruleEngineRunner(sparkSession.sparkContext.broadcast(ruleSuite),
    DataType.fromDDL(DDL), debugMode = debugMode, resolveWith = resolveWith = Some(testDataDF))
val withRules = rer.withColumn("ruleResults", rer)
// ... use the rules
```

You definitely shouldn't use it when using relation or table fields in your expressions e.g. `table.field` this does not work (verify this by running `JoinValidationTest` using `evalCodeGens` instead of `evalCodeGensNoResolve`). There be dragons. This is known to fail on *all* OSS builds and OSS runtimes (up to and including 3.2.0). 10.2.dbr and 9.1.dbr *actually do work* running the tests in notebooks with `resolveWith` and relations (the test itself is not built for this however to ensure cross compilation on the OSS base).

Last update: January 16, 2025 13:21:08

Created: January 16, 2025 13:21:08

## 5.9 QualityExpressions

ExpressionRunner applies a RuleSuite over a dataset returning the results of any expression as yaml (json cannot support non string map keys). When used with just aggregate expressions it allows running dataset level checks, run after DQ it also allows statistics on individual rule results.

It is important to note that if you are having multiple runners in the same data pipeline they should each use different RuleSuites, and you should consider .cache'ing the intermediate results.

RuleSuites are built per the normal DQ rules and executed by adding an expressionRunner column:

```
val dqRuleSuite = ...

val aggregateRuleSuite =

val testDataDF = ...

import frameless._
import quality.implicit._

// first add dataQuality, then ExpressionRunner
val processed = taddDataQuality(sparkSession.range(1000).toDF, dqRuleSuite).select(expressionRunner(aggregateRuleSuite)).cache

val res = processed.selectExpr("expressionResults.*").as[GeneralExpressionsResult].head()
assert(res == GeneralExpressionsResult(Id(10, 2), Map(Id(20, 1) -> Map(
  Id(30, 3) -> GeneralExpressionResult("'499500'\n", "BIGINT"),
  Id(31, 3) -> GeneralExpressionResult("'500'\n", "BIGINT")
))))

val gres =
  processed.selectExpr("rule_result(expressionResults, pack_ints(10,2), pack_ints(20,1), pack_ints(31,3)) rr")
    .selectExpr("rr.*").as[GeneralExpressionResult].head

assert(gres == GeneralExpressionResult("'500'\n", "BIGINT"))
```

To retrieve results in the correct type use `from_yaml` with the correct ddl. As Spark needs an exact type for any expression you can't simply flatten or explode as with the other Quality runner types, each result can have it's own type. As such it's recommended that the expressionRunner result row is cached and extraction is performed with one of the following pattern:

```
import sparkSession.implicit._
val t31_3 = processed.select(from_yaml(rule_result(col("expressionResults"), pack_ints(10,2), pack_ints(20,1), pack_ints(31,3)), 'BIGINT')).as[Long].head
```

Or parse the GeneralExpressionResult map directly and:

```
val t31_3 = sparkSession.sql(s"from_yaml(${res.ruleSetResults(Id(20,1))(Id(30,3)).ruleResult}, 'BIGINT')).as[Long].head
```

or, finally, and perhaps as a last resort, to use snakeyaml and consume using the resulting java:

```
import org.yaml.snakeyaml.Yaml
val yaml = new Yaml();
val obj = yaml.load[Int](res.ruleSetResults(Id(20,1))(Id(30,3)).ruleResult).toLong;
println(obj);
```

However, as can be seen with the direct use of snakeyaml example the types may not always automatically align and, in this case or Decimal you risk losing precision. Note that the yml spec allows the default implementation as the values have **no bit-length** for either integer or floats.

To increase precision / accuracy of the yaml types if you are not using `from_yaml`, you can provide the `renderOptions` map with `useFullScalarType = 'true'`. This changes the output considerably:

```
val processed = taddDataQuality(sparkSession.range(1000).toDF, rows).select(expressionRunner(rs, renderOptions = Map("useFullScalarType" -> "true")))

val gres =
  processed.selectExpr("rule_result(expressionResults, pack_ints(10,2), pack_ints(20,1), pack_ints(31,3)) rr")
    .selectExpr("rr.*").as[GeneralExpressionResult].head

// NOTE: the extra type information allows snakeyaml to process Long directly without precision loss
assert(gres == GeneralExpressionResult("!!java.lang.Long '500'\n", "BIGINT"))

import org.yaml.snakeyaml.Yaml
val yaml = new Yaml();
val obj = yaml.load[Long](res.ruleSetResults(Id(20,1))(Id(30,3)).ruleResult);
println(obj);
```

NB: Decimal's will be stored with a `java.math.BigDecimal` type, rather than `scala.math.BigDecimal`

### You can add tags back in if needed

As using `useFullScalarType -> true` adds yaml type tags on all output scalars it can increase storage costs considerably, as such it's disabled by default.

It can however be retrieved by simply calling `from_yaml` and `to_yaml` again with it enabled if the end result should be used outside of Spark.

### Don't mix aggregation functions with non-aggregation functions

Spark may complain before running an action, but it's also possible to produce incorrect results.

This is the equivalent of running:

```
select *, sum(id) from table
```

which will not work without `group by`'s.

## 5.9.1 strip\_result\_ddl

The `resultType` string is useful in debugging but may not be for storage, if you wish to trim this information from the results use the `strip_result_ddl` function.

This turns the result from `GeneralExpressionResult` into a simple string:

```
val stripped = processed.selectExpr("strip_result_ddl(expressionResults) rr")

val strippedRes = stripped.selectExpr("rr.*").as[GeneralExpressionsResultNoDDL].head()
assert(strippedRes == GeneralExpressionsResultNoDDL(Id(10, 2), Map(Id(20, 1) -> Map(
  Id(30, 3) -> "'499500'\n",
  Id(31, 3) -> "'500'\n")
)))

val strippedGres = {
  import sparkSession.implicit._
  stripped.selectExpr("rule_result(rr, pack_ints(10,2), pack_ints(20,1), pack_ints(31,3))")
    .as[String].head
}

assert(strippedGres == "'500'\n")
```

Last update: January 16, 2025 13:21:08

Created: January 16, 2025 13:21:08





### 5.10.3 Why do I get a java.lang.AbstractMethodError when validating?

---

The validation code also validates the sql documentation, checking documented parameters against lambda parameter names (or indeed that you have any parameters when not a lambda).

You probably have a dependency on the Scala Compiler, due to the scala compiler [requiring a different parser combinator library](#) this may occur due to classpath issues.

To remediate please make sure that Quality is higher up on your dependencies than the scala compiler is. If need be manually specify the parser combinator library dependency, making sure to use the same version declared in Qualities pom.

---

Last update: January 16, 2025 13:21:08

Created: January 16, 2025 13:21:08

## 5.11 Expression Documentation

---

As Quality is based on sql it can be useful to document it in place, particularly with Lambda and Output expressions, but also applies to rules and trigger rules.

The basic format follows javadocs / scaladocs approach, without \*'s on each line, but is possible to define on one line:

```
/** My Description @param name name desc @param othername othername desc @return return val*/
```

This could also be written with newlines including markdown (if the renderer supports it):

```
/**
My Description:

* bullet point
* more points

@param name name desc
@param othername othername:

* more description points

@return return val
*/
```

Param's are optional and will generate a warning if the names don't match in the validate function or if params are used on a non-lambda expression.

The return value is also optional but would apply to all expressions.

Whilst an incorrect parameter name will be flagged and warned against you won't be forced to put a comment for every parameter.

A couple of helpful utility functions:

```
val (errors, warnings, out, docs, expr) = validate(Left(struct), ruleSuite)

import com.sparkutils.quality.utils.{RuleSuiteDocs, RelativeWarningsAndErrors}

val relative = RelativeWarningsAndErrors("../sampleDocsValidation/", errors, warnings)
val md = RuleSuiteDocs.createMarkdown(docs, ruleSuite, expr, qualityURLGOESHERE+"/sqlfunctions/", Some(relative))

IOUtils.write(md, new FileOutputStream("../docs/advanced/sampleDocsOutput.md"))

val emd = RuleSuiteDocs.createErrorAndWarningMarkdown(docs, ruleSuite, relative.copy( relativePath = "../sampleDocsOutput/"))
IOUtils.write(emd, new FileOutputStream("../docs/advanced/sampleDocsValidation.md"))
```

exist to generate docs of a ruleSuite and validation errors. The validate function returns both of these inputs. You must specify the quality url containing the sqlfunction documentation in order to link, hrefs are not carried across mike links yet.

The [sample docs](#) and [sample errors/warnings](#) are generated from the DocMarkdownTest.

---

Last update: January 16, 2025 13:21:08

Created: January 16, 2025 13:21:08

## 5.12 View Loading

As of Spark 3.4 sub queries become a great way to provide lookups and transformation logic in rules. In order to support an easier use of views the following functions have been added in 0.1.0:

```
val (viewConfigs, failed) = loadViewConfigs(loader, config.toDF(), expr("id.id"), expr("id.version"), Id(1,1),
    col("name"),col("token"),col("filter"),col("sql")
)

val results = loadViews(viewConfigs)
```

`loadViewConfigs` takes a `DataFrameLoader` as a parameter allowing Quality to load tables based on your integration logic. There are two flavours, one expecting a table with the following schema:

```
STRUCT< name : STRING, token : STRING nullable, filter : STRING nullable, sql: STRING nullable>
```

and the other tied to a `RuleSuite`:

```
STRUCT< ruleSuiteId: INT, ruleSuiteVersion: INT, name : STRING, token : STRING nullable, filter : STRING nullable, sql: STRING nullable>
```

both versions return any rows for which token and sql are both null in the failed result and the resulting configuration in `viewConfigs`.

Where token is present the loader will be called for it and the filter column applied (allowing re-use).

After loading the `ViewConfig`'s the `loadViews` function can be called, registering all the views via `createOrReplaceTempView` and returning a set of replaced views, `failedToLoadDueToCycles` and `notLoadedViews`, a set of unloaded views. In the event that views refer to other views not present in `ViewConfig` a `MissingViewAnalysisException` will be thrown, `ViewLoaderAnalysisException` for other analysis exceptions, as will parsing exceptions as per normal Spark.

`loadViews` will attempt to automatically attempt to resolve `ViewConfigs` that depend on other `ViewConfigs`, where there is a cycle that is 2x the number of `ViewConfigs` the call will return with `failedToLoadDueToCycles` as true.

These calls must be made before running any dq, engine or folder using views.

### View names must be quoted if using special characters

A good rule of thumb is minus', dot's etc. that you wouldn't be able to use as a table name in any other sql dialect must be `quoted` in backticks. On Spark versions less than 3.2 any missing views will not contain back ticks, this can lead to situations on earlier Spark versions where views are not loaded and will result in the `MissingViewAnalysisException.missingRelationNames` also not having backticks returned. Quality will attempt to work around this limitation when resolving dependencies.

Last update: January 16, 2025 13:21:08

Created: January 16, 2025 13:21:08

## 6. SQL Functions Documentation

---

### 6.1 `_`

---

`_` ( [ddl type], [nullable] ) provides PlaceHolders for lambda functions to allow partial application, use them in place of actual values or expressions to either change arity or allow use in `_lambda_`.

The default type is Long / Bigint, you will have to provide the types directly when using something else. By default the placeholders are assumed to be nullable (i.e. true), you can use false to state the field should not be null.

### 6.2 `_lambda_`

---

`_lambda_` ( user function ) extracts the Spark LambdaFunction from a resolved user function, this must have the correct types expected by the Spark HigherOrderFunction they are parameters for.

This allows using user defined functions and lambdas with in-built Spark HigherOrderFunctions

### 6.3 `agg_Expr`

---

`agg_Expr` ( [ddl sum type], filter, sum, result ) aggregates on rows which match the filter expression using the sum expression to aggregate then processes the results using the result expression.

You can run multiple `agg_Expr`'s in a single pass select, use the first parameter to thread DDL type information through to the sum and result functions.

### 6.4 `as_uuid`

---

`as_uuid`(lower\_long, higher\_long) converts two longs into a uuid. Note: this is not functionally equivalent to `rng_uuid(longPair(lower, higher))` despite having the same types.

### 6.5 `big_Bloom`

---

`big_Bloom`(buildFrom, expectedSize, expectedFPP) creates an aggregated bloom filter using the buildFrom expression.

The blooms are stored on a shared filesystem using a generated uuid, they can scale to high numbers of items whilst keeping the FPP (e.g. millions at 0.01 would imply 99% probability, you may have to cast to double in Spark 3.2).

buildFrom can be driven by `digestToLongs` or `hashWith` functions when using multiple fields.

#### **Alternatives:**

`big_Bloom`(buildFrom, expectedSize, expectedFPP, 'bloom\_loc') - per above but uses a fixed string bloom\_loc instead of a uuid

### 6.6 `callFun`

---

`callFun` ( user function lambda variable, param1, param2, ... paramN ) used within a lambda function it allows calling a lambda variable that contains a user function.

Used from the top level sql it performs a similar function expecting either a full user function or a partially applied function, typically returned from another lambda user function.

## 6.7 coalesce\_If\_Attributes\_Missing

---

`coalesce_If_Attributes_Missing(expr, replaceWith)` substitutes `expr` with the `replaceWith` expression when `expr` has missing attributes in the source dataframe. Your code must call the `scala processIfAttributeMissing` function before using in `validate` or `ruleEngineRunner/ruleRunner`:

```
val missingAttributesAreReplacedRS = processIfAttributeMissing(rs, struct)
val (errors, _) = validate(struct, missingAttributesAreReplacedRS)
// use it missingAttributesAreReplacedRS in your dataframe..
```

## 6.8 coalesce\_If\_Attributes\_Missing\_Disable

---

`coalesce_If_Attributes_Missing_Disable(expr)` substitutes `expr` with the `DisabledRule Integer result (-2)` when `expr` has missing attributes in the source dataframe. Your code must call the `scala processIfAttributeMissing` function before using in `validate` or `ruleEngineRunner/ruleRunner`:

```
val missingAttributesAreReplacedRS = processIfAttributeMissing(rs, struct)
val (errors, _) = validate(struct, missingAttributesAreReplacedRS)
// use it missingAttributesAreReplacedRS in your dataframe..
```

## 6.9 comparable\_Maps

---

`comparable_Maps(struct | array | map)` converts any maps in the input param into sorted arrays of a key, value struct.

This allows developers to perform sorts, distincts, group bys and union set operations with Maps, currently not supported by Spark sql as of 3.4.

The sorting behaviour uses Sparks existing ordering logic but allows for extension during the calls to the `registerQualityFunctions` via the `mapCompare` parameter and the `defaultMapCompare` function.

## 6.10 digest\_To\_Longs

---

`digest_To_Longs('digestImpl', fields*)` creates an array of longs based on creating the given `MessageDigest impl`. A 128-bit impl will generate two longs from it's digest

## 6.11 digest\_To\_Longs\_Struct

---

`digest_To_Longs_Struct('digestImpl', fields*)` creates structure of longs with `i0` to `iN` named fields based on creating the given `MessageDigest impl`.

## 6.12 disabled\_Rule

---

`disabledRule()` returns the `DisabledRule Integer result (-2)` for use in filtering and to disable rules (which may not signify a version bump)

## 6.13 drop\_field

---

`drop_field(structure_expr, 'field.subfield'*)` removes fields from a structure, but will not remove parent nodes.

This is a wrapped version of 3.4.1's `dropField` implementation.

## 6.14 failed

---

failed() returns the Failed Integer result (0) for use in filtering

## 6.15 field\_Based\_ID

---

field\_Based\_ID('prefix', 'digestImpl', fields\*) creates a variable bit length id by using a given MessageDigest impl over the fields, prefix is used with the \_base, \_i0 and \_iN fields in the resulting structure

## 6.16 flatten\_Results

---

flatten\_Results(dataQualityExpr) expands data quality results into a flat array

## 6.17 flatten\_Rule\_Results

---

flatten\_Rule\_Results(dataQualityExpr) expands data quality results into a structure of flattenedResults, salientRule (the one used to create the output) and the rule result.

salientRule will be null if there was no matching rule

## 6.18 from\_yaml

---

from\_yaml(string, 'ddlType') uses snakeyaml to convert yaml into Spark datatypes

## 6.19 hash\_Field\_Based\_ID

---

hash\_Field\_Based\_ID('prefix', 'digestImpl', fields\*) creates a variable bit length id by using a given Guava Hasher impl over the fields, prefix is used with the \_base, \_i0 and \_iN fields in the resulting structure

## 6.20 hash\_With

---

hash\_With('HASH', fields\*) Generates a hash value (array of longs) suitable for using in blooms based on the given Guava hash implementation.

*Note* based on testing the digestToLongs function for SHA256 and MD5 are faster.

Valid hashes: MURMUR3\_32, MURMUR3\_128, MD5, SHA-1, SHA-256, SHA-512, ADLER32, CRC32, SIPHASH24. When an invalid HASH name is provided MURMUR3\_128 will be chosen.

### Open source Spark 3.1.2/3 issues

On Spark 3.1.2/3 open source this may get resolver errors due to a downgrade on guava version - 15.0 is used on Databricks, open source 3.0.3 uses 16.0.1, 3.1.2 drops this to 11 and misses crc32, sipHash24 and adler32.

## 6.21 hash\_With\_Struct

---

per hash\_With('HASH', fields\*) but generates a struct with i0 to ix named longs. This structure is not suitable for blooms

## 6.22 id\_base64

---

id\_base64(base, i0, i1, ix) Generates a base64 encoded representation of the id, either the single struct field or the individual parts

### Alternatives:

id\_base64(id\_struct) Uses an id field to generate

## 6.23 id\_Equal

---

id\_Equal(leftPrefix, rightPrefix) takes two prefixes which will be used to match leftPrefix\_base = rightPrefix\_base, i0 and i1 fields. It does not currently support more than two i's

## 6.24 id\_from\_base64

---

id\_from\_base64(base64) Parses the base64 string with an expected default long size of two i.e. an 160bit ID, any string which is not of the correct size will return null

### Alternatives:

id\_from\_base64(base64f, size) Uses a size, which must be literal, to specify the type

## 6.25 id\_raw\_type

---

id\_raw\_type(idstruct) Given a prefixed id returns the fields without their prefix

## 6.26 id\_size

---

id\_size(base64) Given a base64 from id\_base64 returns the number of `_i` long fields

## 6.27 inc

---

inc() increments the current sum by 1

### Alternatives:

inc( x ) use an expression of type Long to increment

## 6.28 long\_Pair

---

long\_Pair(lower, higher) creates a structure with these lower and higher longs

## 6.29 long\_Pair\_Equal

---

long\_Pair\_Equal(leftPrefix, rightPrefix) takes two prefixes which will be used to match leftPrefix\_lower = rightPrefix\_lower and leftPrefix\_higher = rightPrefix\_higher

## 6.30 long\_Pair\_From\_UUID

---

long\_Pair\_From\_UUID(expr) converts a UUID to a structure with lower and higher longs



## 6.31 map\_Contains

---

map\_Contains('mapid', expr) returns true if there is an item in the map

## 6.32 map\_Lookup

---

map\_Lookup('mapid', expr) returns either the lookup in map specified by mapid or null

## 6.33 meanF

---

meanF() simple mean on the results, expecting sum and count type Long

## 6.34 murmur3\_ID

---

murmur3ID('prefix', fields\*) Generates a 160bit id using murmer3 hashing over input fields, prefix is used with the `_base`, `_i0` and `_i1` fields in the resulting structure

## 6.35 pack\_Ints

---

pack\_Ints(lower, higher) a packaged long from two ints, used within result compression

## 6.36 passed

---

passed() returns the Passed Integer for use in filtering: 10000

## 6.37 prefixed\_To\_Long\_Pair

---

prefixed\_To\_Long\_Pair(field, 'prefix') converts a 128bit longpair field with the given prefix into a higher and lower long pair without prefix.

This is suitable for converting provided id's into uuids for example via a further call to rngUUID.

## 6.38 print\_Code

---

print\_Code( [msg], expr ) prints the code generated by an expression, the value variable and the isNull variable and forwards eval calls / type etc. to the expression.

The code is printed once per partition on the **executors** std. output. You will have to check each executor to find the used nodes output. To use with unit testing on a single host you may overwrite the writer function in registerQualityFunctions, you should however use a top level object and var to write into (or stream), printCode will not be able to write to std out properly (spark redirects / captures stdout) or non top level objects (due to classloader / function instance issues). Testing on other hosts without using stdout should do so to a shared file location or similar.

!!! "information" It is not compatible with every expression Aggregate expressions like aggExpr or sum etc. won't generate code so they aren't compatible with printCode.

`\_lambda\_` is also incompatible with printCode both wrapping a user function and the `\_lambda\_` function. Similarly the `\_()` placeholder function cannot be wrapped.

Any function expecting a specific signature like aggExpr or other HigherOrderFunctions like aggregate or filter are unlikely to support wrapped arguments.

## 6.39 print\_Expr

---

`print_Expr( [msg], expr )` prints the expression tree via `toString` with an optional `msg`

The message is printed to the **driver** nodes `std. output`, often shown in notebooks as well. To use with unit testing you may overwrite the writer function in `registerQualityFunctions`, you should however use a top level object and `var` to write into (or stream).

## 6.40 probability

---

`probability(expr)` will translate probability rule results into a double, e.g. 1000 returns 0.01. This is useful for interpreting and filtering on probability based results: 0 -> 10000 non-inclusive

## 6.41 probability\_In

---

`probability_In(expr, 'bloomid')` returns the probability of the `expr` being in the bloomfilter specified by `bloomid`.

This function either returns 0.0, where it is definitely not present, or the original FPP where it *may* be present.

You may use `digestToLongs` or `hashWith` as appropriate to use multiple columns safely.

## 6.42 provided\_ID

---

`provided_ID('prefix', existingLongs)` creates an id for an existing array of longs, `prefix` is used with the `_base`, `_i0` and `_iN` fields in the resulting structure

## 6.43 results\_With

---

`results_With( x )` process results `lambda x` (e.g. `(sum, count) -> sum`) that takes `sum` from the aggregate, `count` from the number of rows counted. Defaults both the `sumtype` and `counttype` as `LongType`

### Alternatives:

`results_With( [sum ddl type], x)` Use the given `ddl type` for the `sum type` e.g. `'MAP<STRING, DOUBLE>'`

`results_With( [sum ddl type], [result ddl type], x)` Use the given `ddl type` for the `sum` and `result types`

## 6.44 return\_Sum

---

`return_Sum( sum type ddl )` just returns the `sum` and ignores the `count param`, expands to `resultsWith( [sum ddl_type], (sum, count) -> sum)`

## 6.45 reverse\_Comparable\_Maps

---

reverses a call to `comparableMaps`

## 6.46 rng

---

`rng()` Generates a 128bit random id using `XO_RO_SHI_RO_128_PP`, encoded as a lower and higher long pair

### Alternatives:

`rng('algorithm')` Uses Commons RNG `RandomSource` to implement the RNG

`rng('algorithm', seedL)` Uses Commons RNG `RandomSource` to implement the RNG with a long seed

## 6.47 rng\_Bytes

---

`rng_Bytes()` Generates a 128bit random id using `XO_RO_SHI_RO_128_PP`, encoded as a byte array

### Alternatives:

`rng_Bytes('algorithm')` Uses Commons RNG RandomSource to implement the RNG

`rng_Bytes('algorithm', seedL)` Uses Commons RNG RandomSource to implement the RNG with a long seed

`rng_Bytes('algorithm', seedL, byteCount)` Uses Commons RNG RandomSource to implement the RNG with a long seed, with a specific byte length integer (e.g. 16 is two longs, 8 is integer)

## 6.48 rng\_ID

---

`rng_ID('prefix')` Generates a 160bit random id using `XO_RO_SHI_RO_128_PP`, prefix is used with the `_base`, `_i0` and `_i1` fields in the resulting structure

### Alternatives:

`rng_Id('prefix', 'algorithm')` Uses Commons RNG RandomSource to implement the RNG, using other algorithm's may generate more long `_iN` fields

`rng_Id('prefix', 'algorithm', seedL)` Uses Commons RNG RandomSource to implement the RNG with a long seed, using other algorithm's may generate more long `_iN` fields

## 6.49 rng\_UUID

---

`rng_UUID(expr)` takes either a structure with lower and higher longs or a 128bit binary type and converts to a string uuid - use with, for example, the `rng()` function.

If a simple conversion from two longs (lower, higher) to a uuid is desired then use `as_uuid`, `rng_uuid` applies the same transformations as the Spark uuid to the input higher and lower longs.

## 6.50 rule\_result

---

`rule_result(ruleSuiteResultColumn, packedRuleSuiteId, packedRuleSetId, packedRuleId)` uses the packed long id's to retrieve the integer ruleResult (see below for ExpressionRunner) or null if it can't be found.

You can use `pack_ints(id, version)` to specify each id if you don't already have the packed long version. This is suitable for retrieving individual rule results, for example to aggregate counts of a specific rule result, without having to resort to using filter and map values.

`rule_result` works with `ruleRunner` (DQ) results (including details) and `ExpressionRunner` results. `ExpressionRunner` results return a tuple of ruleResult and resultDDL, both strings, or if `strip_result_ddl` is called a string.

## 6.51 rule\_Suite\_Result\_Details

---

`rule_Suite_Result_Details(dq)` strips the overallResult from the dataquality results, suitable for keeping overall result as a top-level field with associated performance improvements

## 6.52 small\_Bloom

---

`small_Bloom(buildFrom, expectedSize, expectedFPP)` creates a simply bytearray bloom filter using the expected size and fpp - 0.01 is 99%, you may have to cast to double in Spark 3.2. `buildFrom` can be driven by `digestToLongs` or `hashWith` functions when using multiple fields.

## 6.53 soft\_Fail

---

`soft_Fail(ruleexpr)` will treat any rule failure (e.g. `failed()`) as returning `softFailed()`

## 6.54 soft\_Failed

---

`soft_Failed()` returns the `SoftFailed` Integer result (-1) for use in filtering

## 6.55 strip\_result\_ddl

---

`strip_result_ddl(expressionsResult)` removes the `resultDDL` field from `expressionsRunner` results, leaving only the string result itself for more compact storage

## 6.56 sum\_With

---

`sum_With(x)` adds expression `x` for each row processed in an `aggExpr` with a default of `LongType`

### Alternatives:

`sum_With([ddl type], x)` Use the given ddl type e.g. `'MAP<STRING, DOUBLE>'`

## 6.57 to\_yaml

---

`to_yaml(expression, [options map])` uses `sakeyaml` to convert Spark datatypes into yaml.

Passing null into the function returns a null yaml (newline is appended):

```
null
```

All null values will be treated in this fashion. The string "null" will be represented as (again new line is present):

```
'null'
```

The optional "options map" parameter currently supports the following output options:

- `useFullScalarType`, defaults to false. Instead of using the default yaml tags uses the full classnames for scalars, reducing risk of precision loss if the yaml is to be used outside of the `from_yaml` function.

sample usage:

```
val df = sparkSession.sql("select array(1,2,3,4,5) og")
  .selectExpr("to_yaml(og, map('useFullScalarType', 'true')) y")
  .selectExpr("from_yaml(y, 'array<int>') f")
  .filter("f == og")
```

### snakeyaml is provided scope

Databricks runtimes provide `sparkyaml`, so whilst Quality builds against the correct versions for Databricks it can only use provided scope.

`snakeyaml` is 1.24 on DBRs below 13.1, but not present on OSS, so you may need to add the dependency yourself, tested compatible versions are 1.24 and 1.33.

## 6.58 unique\_ID

---

uniqueID('prefix') Generates a 160bit guaranteed unique id (requires MAC address uniqueness) with contiguous higher values within a partition and overflow with timestamp ms., prefix is used with the `_base`, `_i0` and `_i1` fields in the resulting structure

## 6.59 unpack

---

unpack(expr) takes a packed rule long and unpacks it to a `.id` and `.version` structure

## 6.60 unpack\_Id\_Triple

---

unpack\_Id\_Triple(expr) takes a packed rule triple of longs (ruleSuiteId, ruleSetId and ruleId) and unpacks it to (ruleSuiteId, ruleSuiteVersion, ruleSetId, ruleSetVersion, ruleId, ruleVersion)

## 6.61 update\_field

---

update\_field(structure\_expr, 'field.subfield', replaceWith, 'fieldN', replaceWithN) processes structures allowing you to replace sub items (think lens in functional programming) using the structure fields path name.

This is a wrapped version of 3.4.1's withField implementation.

## 6.62 za\_Field\_Based\_ID

---

za\_Field\_Based\_ID('prefix', 'digestImpl', fields\*) creates a 64bit id (96bit including header) by using a given Zero Allocation impl over the fields, prefix is used with the `_base` and `_i0` fields in the resulting structure.

Prefer using the zaLongsFieldBasedID for less collisions

## 6.63 za\_Hash\_Longs\_With

---

za\_Hash\_Longs\_With('HASH', fields\*) generates a multi length long array but with a [zero allocation implementation](#). This structure is suitable for blooms, the default XXH3 algorithm is the 128bit version of that used by the internal bigBloom implementation.

Available HASH functions are MURMUR3\_128, XXH3

## 6.64 za\_Hash\_Longs\_With\_Struct

---

similar to za\_Hash\_Longs\_With('HASH', fields\*) but generates an ID relevant multi length long struct, which is not suitable for blooms

## 6.65 za\_Hash\_With

---

za\_Hash\_With('HASH', fields\*) generates a single length long array always with 64 bits but with a [zero allocation implementation](#). This structure is suitable for blooms, the default XX algorithm is used by the internal bigBloom implementation.

Available HASH functions are MURMUR3\_64, CITY\_1\_1, FARMNA, FARMOU, METRO, WY\_V3, XX

## 6.66 za\_Hash\_With\_Struct

---

similar to za\_Hash\_With('HASH', fields\*) but generates an ID relevant multi length long struct (of one long), which is not suitable for blooms.

Prefer zaHashLongsWithStruct for reduced collisions with either the MURMUR3\_128 or XXH3 versions of hashes

## 6.67 za\_Longs\_Field\_Based\_ID

---

za\_Longs\_Field\_Based\_ID('prefix', 'digestImpl', fields\*) creates a variable length id by using a given Zero Allocation impl over the fields, prefix is used with the \_base, \_i0 and \_iN fields in the resulting structure. Murmur3\_128 is faster than on the Guava implementation.

---

Last update: January 16, 2025 13:21:08

Created: January 16, 2025 13:21:08